

FOR IMMEDIATE RELEASE
December 18, 2025

For more information:
Penny Vavura, Director of External Affairs
M: 518-339-6042
pvavura@portofalbany.us

NEWS RELEASE

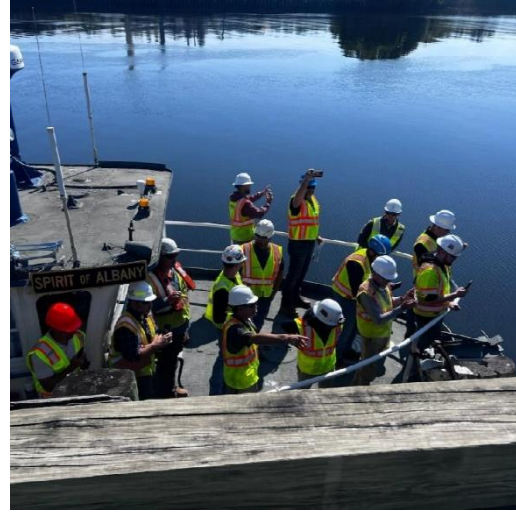
Port of Albany-Rensselaer, New York | 2025 Year in Review



- **MARITIME TERMINAL**

The entirety of the cable necessary for the Champlain Hudson Power Express (CHPE) was handled through the Port of Albany, NY. This project is an innovative energy transmission line in and along the Hudson River designed to bring hydropower generated in Quebec to New York City. The cables are manufactured in Sweden and were shipped directly to the Port of Albany. The crew at the Port expended more than 11,750 longshore hours and handled more than 340 miles of cable necessary for the project.

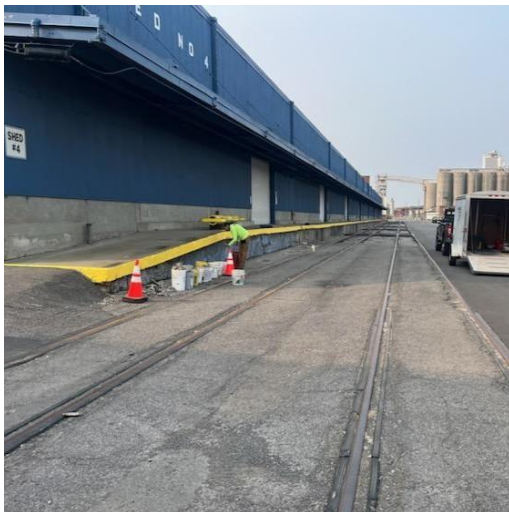
Additionally, this year and into 2026, the Port has handled and shipped more than 150 onshore wind power components including hubs, drive trains, and machine heads -- some pieces that weigh hundreds of thousands of pounds! -- that were manufactured at GE Vernova in Schenectady destined for Australia.



• ECONOMIC DEVELOPMENT

The Port competed for and was awarded an \$18.79 million grant through the Focused Attraction of Shovel-ready Tracts New York (FAST NY) program for utility infrastructure work at the expansion project (Beacon Island), including installation of a high-voltage substation, a wastewater treatment plant, and pump station.

The Port also began implementation of Passenger and Freight Rail Assistance Program (PFRAP) funding the Port competed for and was awarded for improvements in the Albany maritime terminal. The project is enhancing the on-dock heavy rail and the supporting wharf deck. This is critical maritime infrastructure for heavy cargo handling and movement. The project is expected to be completed in 2026.



• ECONOMIC OPPORTUNITIES IN DOING BUSINESS

The Albany Port District Commission (APDC) accomplishes the New York State goal to employ and utilize Service-Disabled Veteran Owned Businesses (SDVOB) and Minority and Women-Owned Business Enterprises (MWBEs). Sharing the State's mission to promote equality of economic opportunities, the APDC ensures that doing business at the Port expands equal access and broadcast call for submissions. In 2025, the Port dedicated more than \$1,000,000 in operational spending toward SDVOB and MWBE for services and goods at the Port.

Additionally, close to 20 qualified SDVOB and MWBE enterprises were utilized for commodities and business and industry needs. The Port provides information and resources that increases access to opportunities for all qualified businesses, including minority and women-owned business enterprises and service-disabled veterans throughout New York State.



- ENVIRONMENTAL INITIATIVES**

In 2025, The Port pursued and received renewed Green Marine certification, a leading international environmental program for the maritime industry. The Port pursues across-the-board environmental practices and enhancements that up level its accreditation annually. The Port has demonstrated exceptional environmental leadership as evidenced by its consecutive Green Marine certification since 2016.

In honor of Earth Day, Port tenants, neighbors, and staff came together to help with spring clean-up at the Port's cultural partner, Historic Cherry Hill in Albany's South End.

The Port hosted Green Marine's North American Program Manager Allyson Ryan for a Port-wide environmental review workshop. The workshop included a presentation, and lunch and learn for Port Tenants on how their companies' environmental practices can be applied to membership goals and supporting environmental stewardship practices in the maritime industry as part of Green Marine.



- SAFETY, SECURITY, and PREPAREDNESS**

In June, the Port was one of the statewide safety exercise event hosts and partners for the New York National Guard's 2nd Civil Support Team (based at Stratton Air National Guard Base in Scotia.) More than 120 National Guard personnel, in addition to the Albany Police Department, Albany Fire Department, and the New York State Police conducted a simulated multi-agency hazmat training exercise.

This exercise was part of year-round training that the Port Security Team undertakes that encompasses land- and river-based procedures as well as cybersecurity in partnership with the U.S. Coast Guard and U.S. Department of Homeland Security Customs and Border Protection.



- **INFRASTRUCTURE and EQUIPMENT**

The Port's Maintenance & Operations team is responsible for oversight of the 30-acre maritime terminal and its eight warehouses, in addition to the Port District's 450 acres including 21 tenant buildings and public roadways. The Port utilizes outside vendors and contractors in addition to deploying the M&O team for critical projects. Highlights from 2025 include 2,800SF of concrete work to repair loading docks on all the sheds and more than 35,000SF of roof work including skylight removal, repair and replacement, brick repair, and resurfacing.

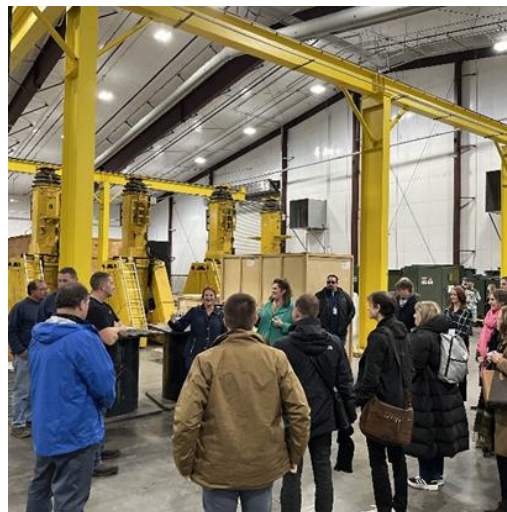
In 2025, the Port also added to its equipment fleet including a pure vacuum compact street sweeper (to optimize fuel consumption and reduce noise emissions) and two new Hyster forklifts with 7,000 lb. capacity to add to critical cargo workflow in the Maritime Terminal.



- **PORT TENANTS**

In addition to the maritime business that brings a quarter of a million tons of break bulk, bulk, and special project cargo across the docks, the Port hosts 20 tenants that represent aggregate/paving, animal feed, construction, food production (grain mill), government/support services, landscaping, logistics, maritime transportation, paper products, petroleum storage and distribution, power generation, rail transportation, scrap recycling/construction debris, stevedoring, and warehousing.

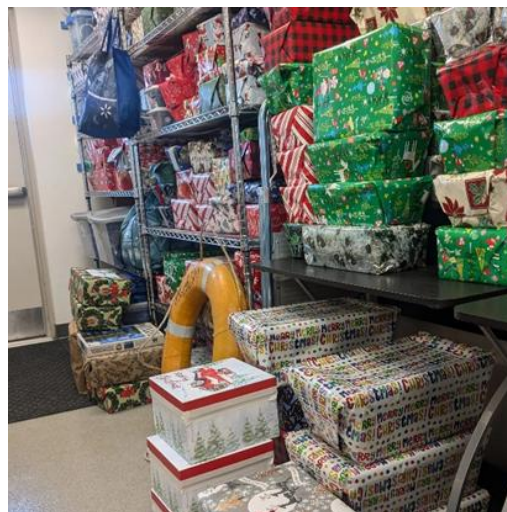
In 2025, the Port supported some major tenant expansion and extensions including: **Dagen Trucking's** 3X-expansion of outside industrial storage at the Port; **Waste Management's** 10-year lease renewal commitment; the **International Longshoremen's Association (ILA) #1294** and **Logistec** negotiations and commitment to a new labor agreement; and **Ardent Mills** making a multi-million dollar investment to upgrade truck loading and rail car unloading capabilities at its Port facility.



• COMMUNITY OUTREACH

Throughout the year, the Port hosts groups who are interested in a better understanding of the connection between Port and the greater community – some groups come out of nostalgia, some want to hear about workforce opportunities, some seeking business connection and some appreciating the Port’s connection of Albany and the Capital Region to the marine highway to the world.

This year, the Port continued to host a range of visitors, including regional community tour groups, regional colleges and universities including a graduate class on Coastal Management from the UAlbany Dept. of Geography and Planning, and a group of Freight Facilities graduate students from RPI’s Center for Infrastructure, Transportation and the Environment; teachers and educators including the NYS Department of Labor Teacher Ambassadors; and business interests including the international collation of the German American Semiconductor Cities Network (GASCN).



• SEAFARER WELL-BEING

Operating out of the Rev. William G. Hemple Seafarers Center in the Port’s Maritime Terminal, under the leadership of two chaplains and a volunteer Board of Directors, and in partnership with Seafarers International House in NYC, the Albany Maritime Ministry serves the needs of thousands of seafarers annually; advocates for seafarers’ rights; and offers special programs and services, such as Christmas at Sea.

- **IN MEMORY: APDC Commissioner Warren Abriel and ILA Longshoreman Larry Storm**

With hundreds of on-site employees across the Port District, it takes people, skills and leadership to keep the Port and its operations running strong. The Port celebrates the people that make it possible and must recognize the loss of two stalwarts in 2025. They are missed.

Appointed by the Governor in 2021, Albany Port District Commissioner Warren Abriel (left) was a fourth-generation Albany firefighter, who after 46 years of service, retired as Chief. He was always involved in Port industry events and tenant occasions, sharing a warm smile, and updates on recent Disney trips with his family. He brought an embodiment of service and connection.

The Port also lost one of its long-time longshoremen, Larry Storm (right). Larry was a fixture at the Port for more than 55 years. His commitment to his job, his union, and his family was unmatched and was a testament to hard work and dedication.

Fair wind and following seas.



###

With four transport modes -- ocean vessels, barges, freight railroads, interstate highways -- the Port of Albany is Upstate New York's largest public port/logistics hub and serves as a Port of Entry with U.S. Customs and Border Protection. The Port is open and active year-round on 450 acres on both sides of the Hudson River in four municipalities. The Port of Albany is located 124 nautical miles north of New York Harbor. The Port recently completed nearly \$100 million in maritime infrastructure investment and more than \$170 million in an expansion project. For more information, visit www.portofalbany.us.