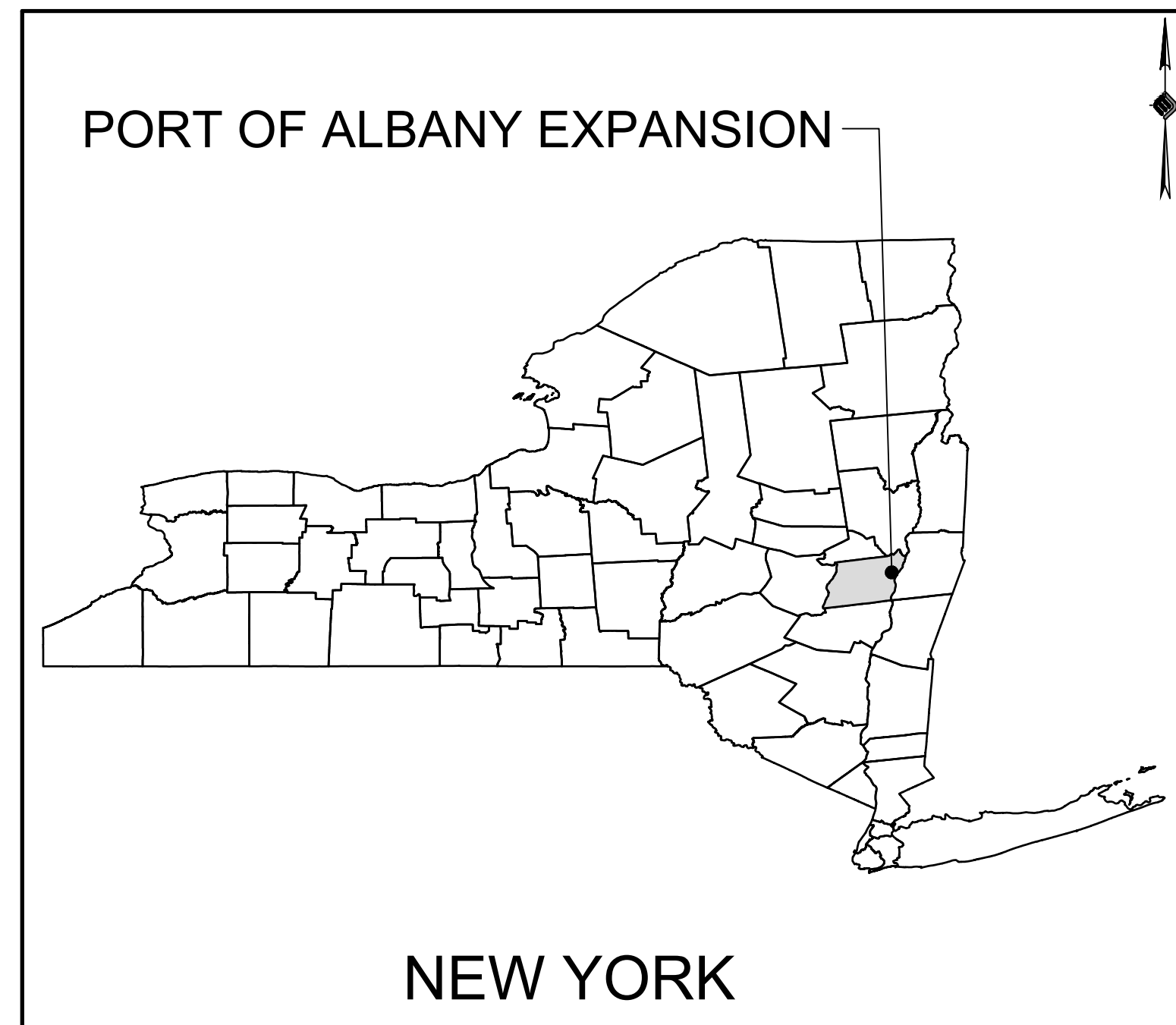


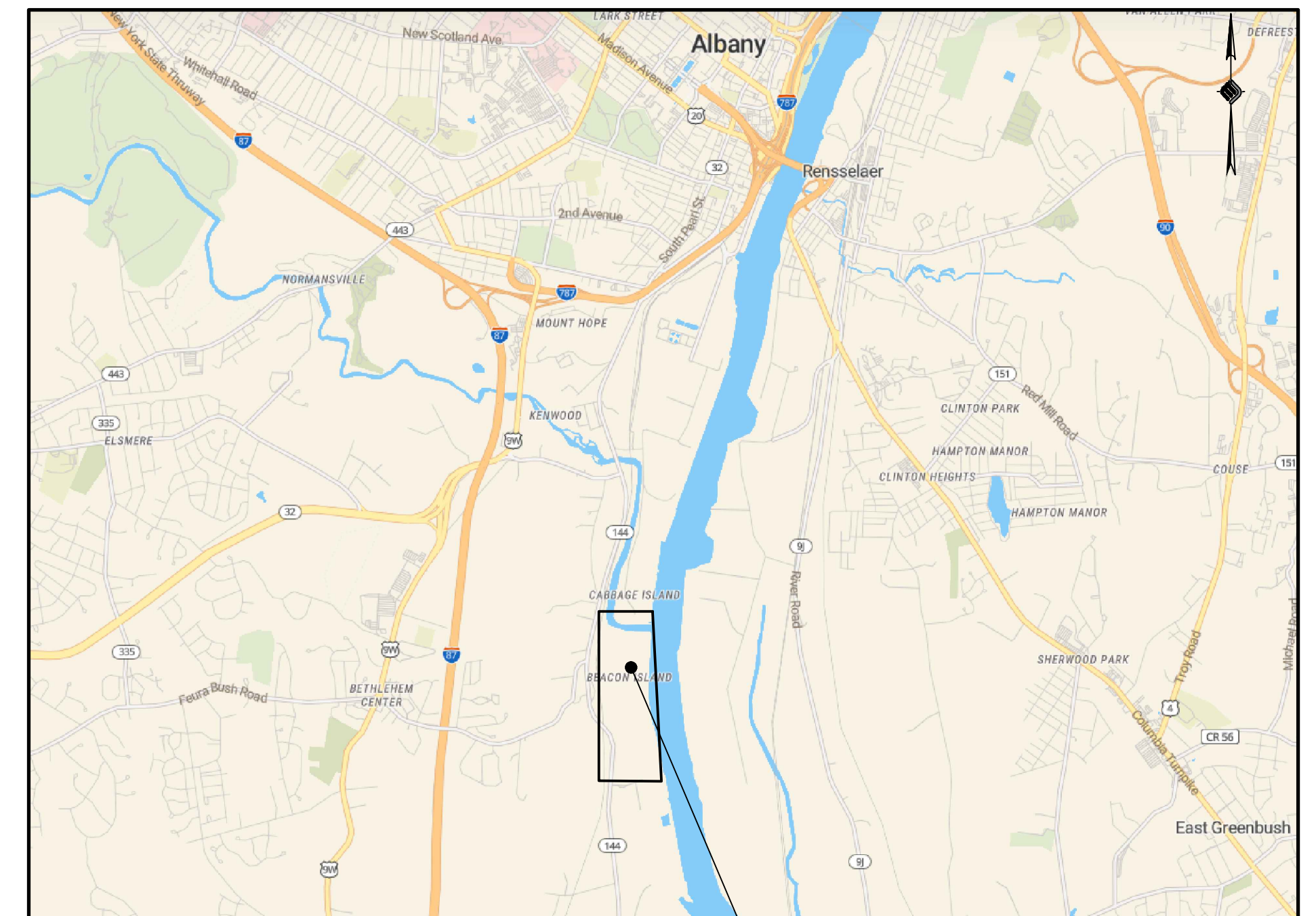
ALBANY PORT DISTRICT COMMISSION OFF-SITE INFRASTRUCTURE IMPROVEMENTS



LOCATION MAP

FINAL DESIGN PLANS
OCTOBER 22, 2021

TOWN OF BETHLEHEM
ALBANY COUNTY
NEW YORK



VICINITY MAP

Sheet List Table	
SHEET NUMBER	SHEET TITLE
COVR	COVER SHEET
GN-01	GENERAL NOTES
TP-01	TYPICAL SECTIONS
RW-01	ROADWAY PLAN
GR-01	GRADING & DRAINAGE PLAN
WZ-01	WORK ZONE TRAFFIC CONTROL PLAN
DT-01	MISCELLANEOUS DETAILS (1 OF 2)
DT-02	MISCELLANEOUS DETAILS (2 OF 2)
619-10	WORK ZONE TRAFFIC CONTROL GENERAL NOTES
619-11	WORK ZONE TRAFFIC CONTROL LEGEND AND NOTES
619-12	SIGN TABLE (SHEETS 1 & 2)
619-20	SHOULDER CLOSURE, 2-LANE, 2-WAY ROADWAY
685-01	PAVEMENT MARKING DETAILS (SHEET 1)

PREPARED FOR:



ALBANY PORT DISTRICT COMMISSION
106 SMITH BOULEVARD
ALBANY, NEW YORK
(518) 463-8763
WWW.ALBANY.GOV

PREPARED BY:



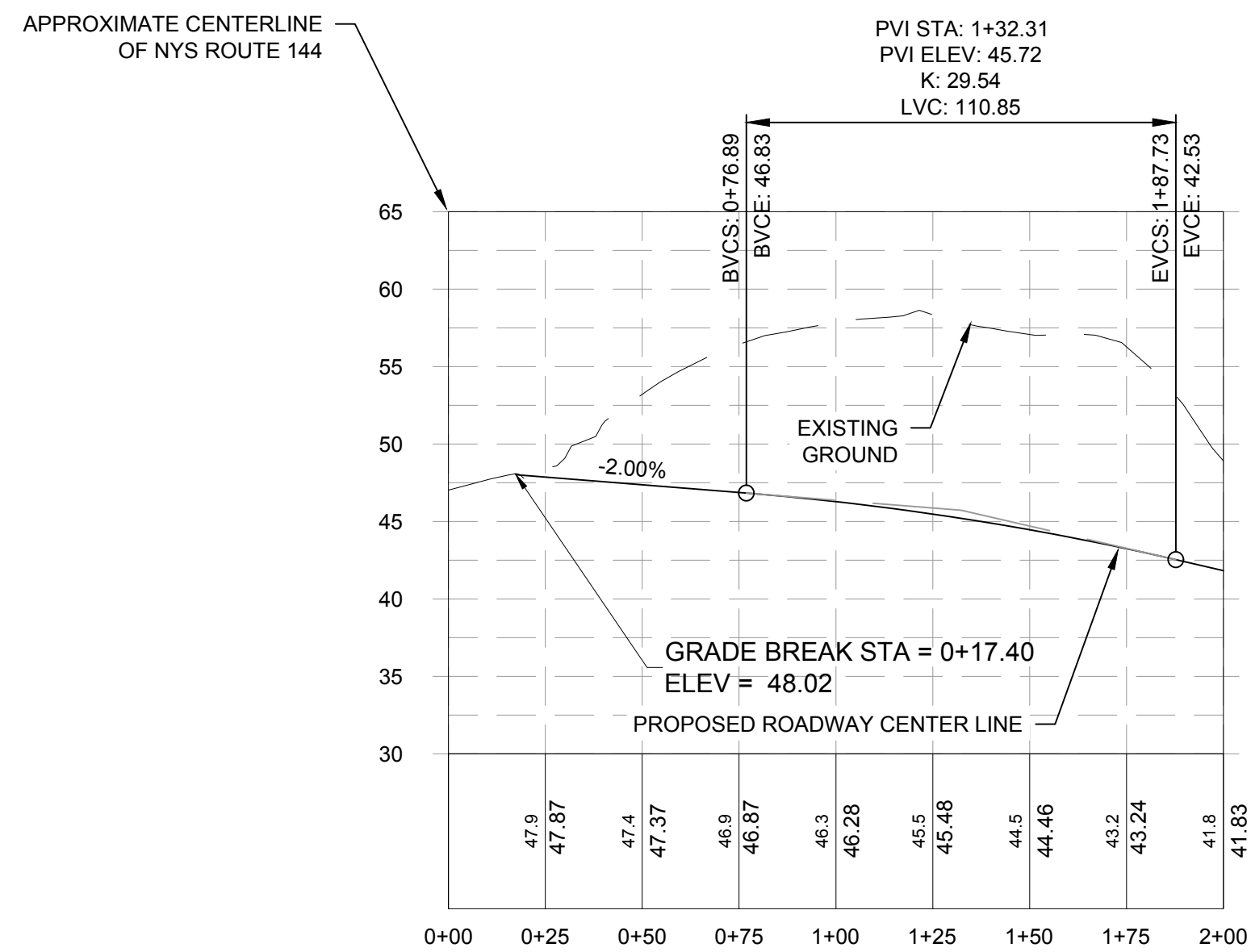
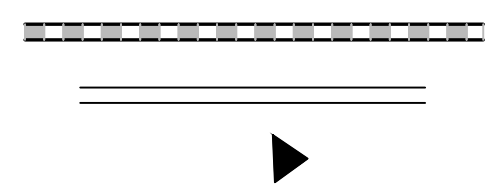
SEALED	ADAM J. FROSINO
PE_NO	088870
PE_DATE	OCTOBER 22, 2021

IT IS A VIOLATION OF THE LAW FOR ANY PERSON, UNLESS ACTING UNDER THE DIRECTION OF A LICENSED PROFESSIONAL ENGINEER, ARCHITECT, LANDSCAPE ARCHITECT, OR LAND SURVEYOR, TO ALTER AN ITEM IN ANY WAY. IF AN ITEM BEARING THE STAMP OF A LICENSED PROFESSIONAL IS ALTERED, THE ALTERING ENGINEER, ARCHITECT, LANDSCAPE ARCHITECT, OR LAND SURVEYOR SHALL STAMP THE DOCUMENT AND INCLUDE THE NOTATION "ALTERED BY" FOLLOWED BY THEIR SIGNATURE, THE DATE OF SUCH ALTERATION, AND A SPECIFIC DESCRIPTION OF THE ALTERATION.

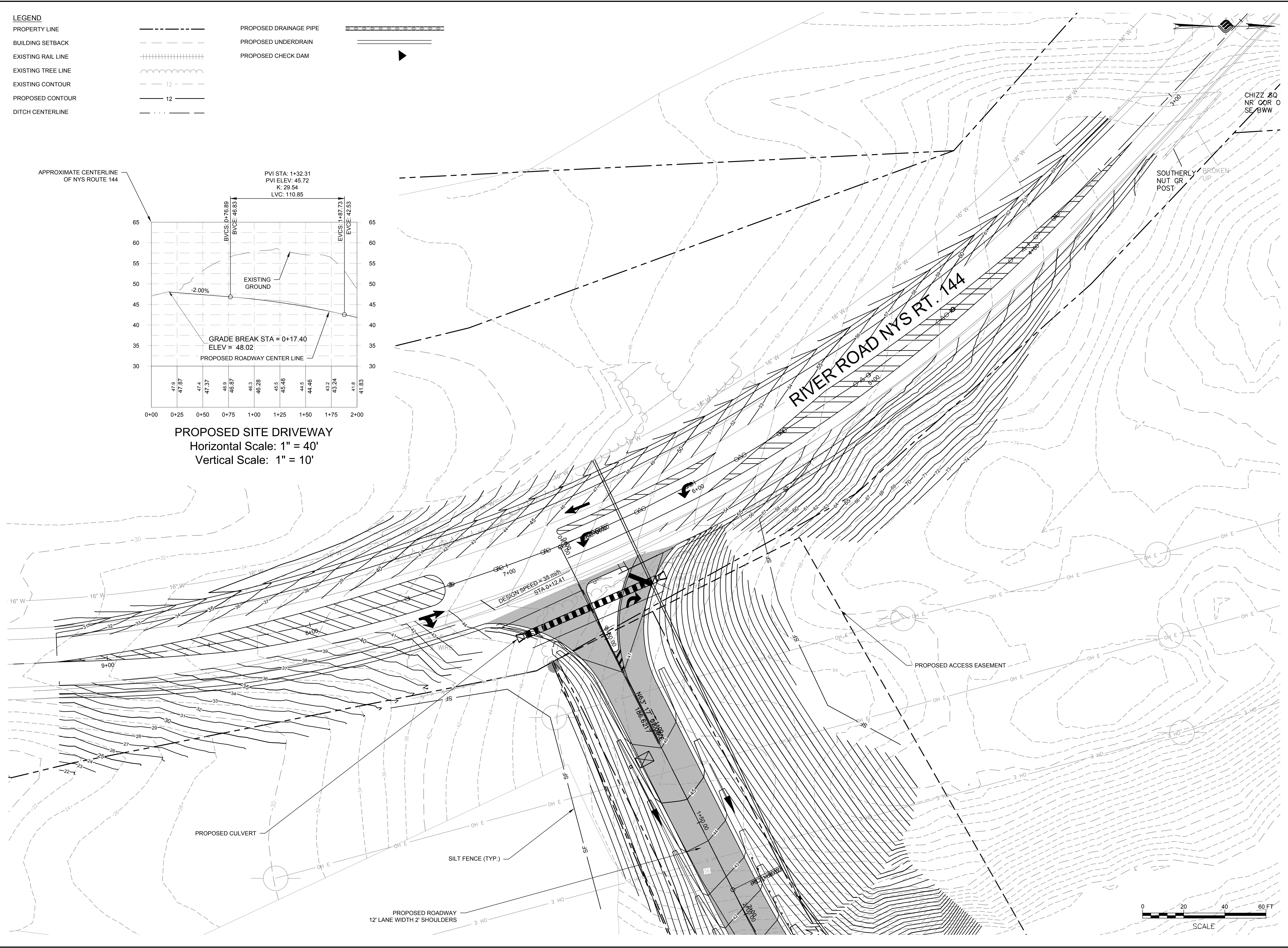
MCFARLAND JOHNSON PROJECT # 18641.00

- LEGEND**
- PROPERTY LINE
 - BUILDING SETBACK
 - EXISTING RAIL LINE
 - EXISTING TREE LINE
 - EXISTING CONTOUR
 - PROPOSED CONTOUR
 - DITCH CENTERLINE

- PROPOSED DRAINAGE PIPE
- PROPOSED UNDERDRAIN
- PROPOSED CHECK DAM



PROPOSED SITE DRIVEWAY
 Horizontal Scale: 1" = 40'
 Vertical Scale: 1" = 10'



McFarland Johnson
 60 RAILROAD PLACE
 SUITE 402
 SARATOGA SPRINGS, NEW YORK 12866
 P: 518-580-9380 F: 518-580-9383
 SaratogaROM@mjinc.com

PROJECT MILESTONE
FINAL DESIGN PLANS

NO.	DATE	DESCRIPTION

CLIENT:
ALBANY PORT DISTRICT COMMISSION
 ALBANY, NEW YORK

PROJECT:
**PORT OF ALBANY OFF-SITE
 INFRASTRUCTURE IMPROVEMENTS**

DRAWN	JES
DESIGNED	NSO
CHECKED	AJF
SCALE	1"=20'
DATE	OCTOBER 22, 2021
PROJECT	18641.00

IT IS A VIOLATION OF LAW FOR ANY PERSON, UNLESS THEY ARE ACTING UNDER THE DIRECT DIRECTION OF A LICENSED PROFESSIONAL ENGINEER, ARCHITECT, LANDSCAPE ARCHITECT, OR LAND SURVEYOR, TO ALTER AN ITEM IN ANY WAY. IF AN ITEM BEARING THE STAMP OF A LICENSED PROFESSIONAL IS ALTERED, THE ALTERING ENGINEER, ARCHITECT, LANDSCAPE ARCHITECT, OR LAND SURVEYOR SHALL STAMP THE DOCUMENT AND INCLUDE THE NOTATION "ALTERED BY" FOLLOWED BY THEIR SIGNATURE, THE DATE OF SUCH ALTERATION, AND A SPECIFIC DESCRIPTION OF THE ALTERATION.

DRAWING TITLE
GRADING & DRAINAGE PLAN

DRAWING NUMBER
GR-01



McFarland Johnson
 60 RAILROAD PLACE
 SUITE 402
 SARATOGA SPRINGS, NEW YORK 12866
 P: 518-580-9380 F: 518-580-9383
 SaratogaROM@mjinc.com

PROJECT MILESTONE
FINAL DESIGN PLANS

NO.	DATE	DESCRIPTION

CLIENT: **ALBANY PORT DISTRICT COMMISSION**
 ALBANY, NEW YORK
 PROJECT: **PORT OF ALBANY OFF-SITE INFRASTRUCTURE IMPROVEMENTS**

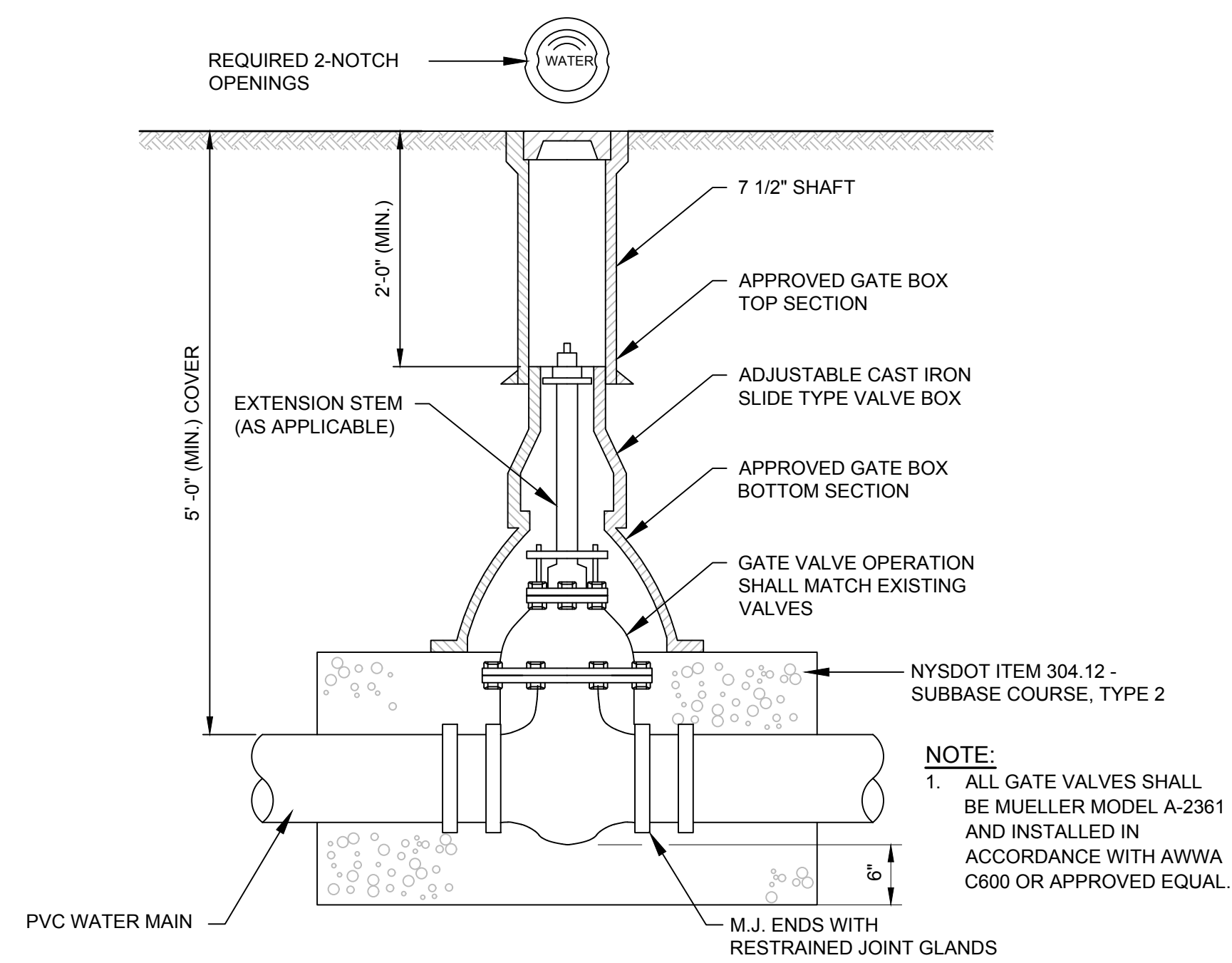
DRAWN	JES
DESIGNED	NSO
CHECKED	AJF
SCALE	1"=30'
DATE	OCTOBER 22, 2021
PROJECT	18641.00

IT IS A VIOLATION OF LAW FOR ANY PERSON, UNLESS THEY ARE ACTING UNDER THE DIRECT DIRECTION OF A LICENSED PROFESSIONAL ENGINEER, ARCHITECT, LANDSCAPE ARCHITECT, OR LAND SURVEYOR, TO ALTER AN ITEM IN ANY WAY. IF AN ITEM BEARING THE STAMP OF A LICENSED PROFESSIONAL IS ALTERED, THE ALTERING ENGINEER, ARCHITECT, LANDSCAPE ARCHITECT, OR LAND SURVEYOR SHALL STAMP THE DOCUMENT AND INCLUDE THE NOTATION "ALTERED BY" FOLLOWED BY THEIR SIGNATURE, THE DATE OF SUCH ALTERATION, AND A SPECIFIC DESCRIPTION OF THE ALTERATION.

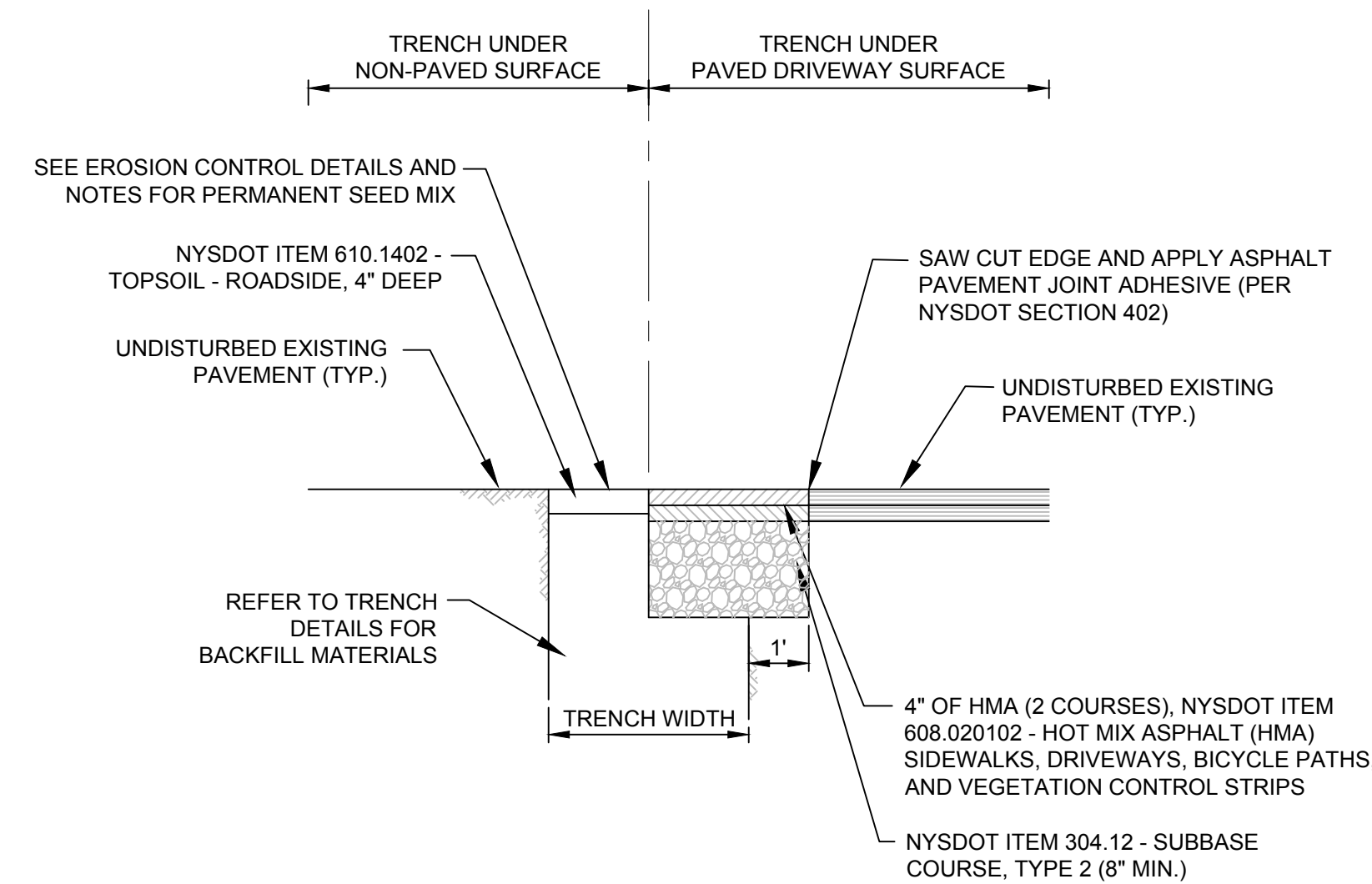
DRAWING TITLE
MISCELLANEOUS DETAILS (2 OF 2)

DRAWING NUMBER

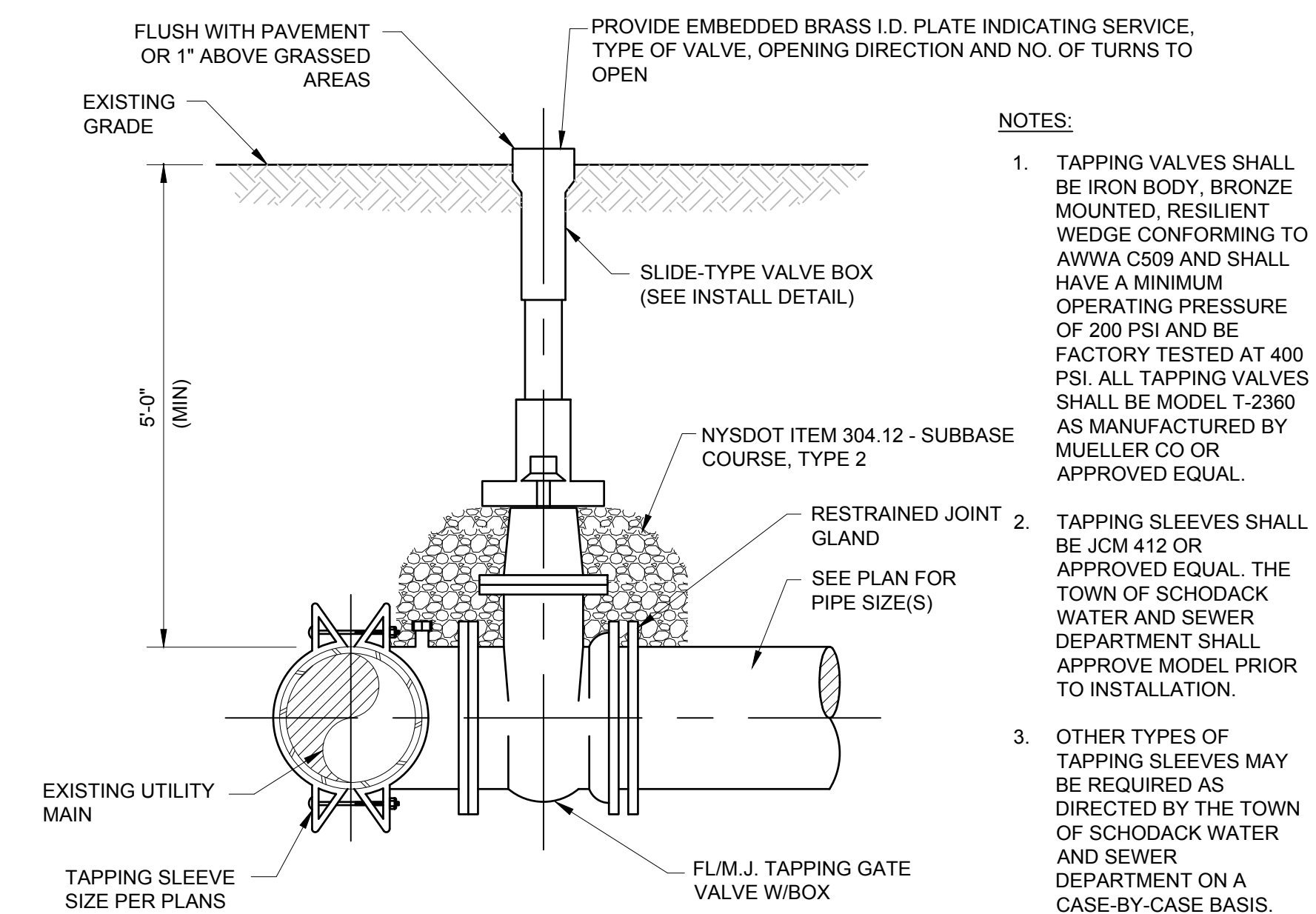
DT-02



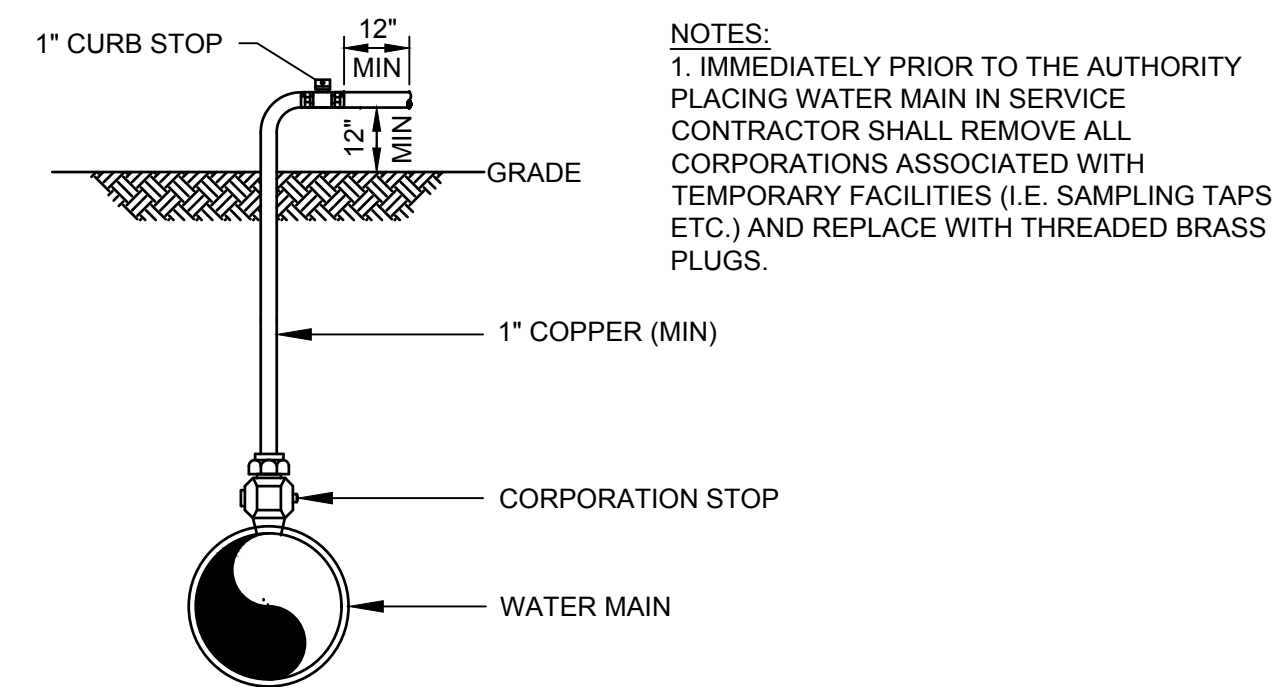
GATE VALVE DETAIL



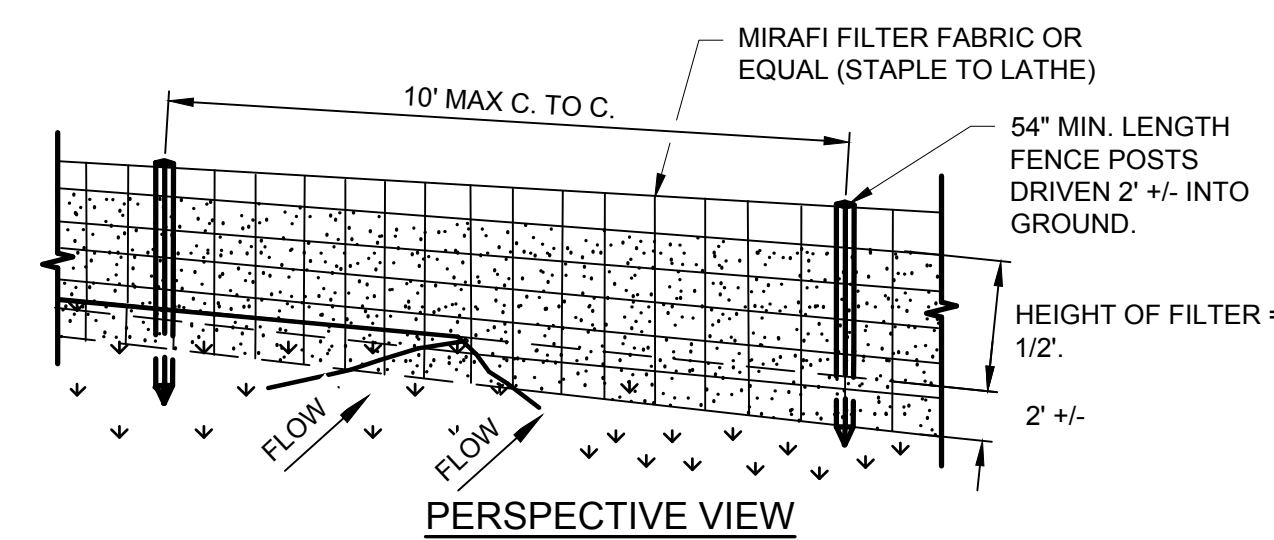
TRENCH UNDER GRASS AND DRIVEWAY DETAIL



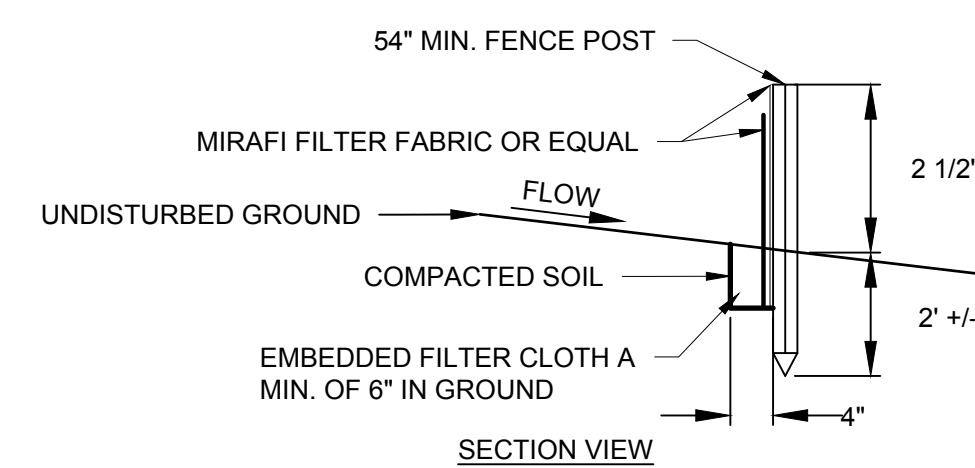
WET TAP DETAIL



DISINFECTION/BLOW-OFF/SAMPLING TAP



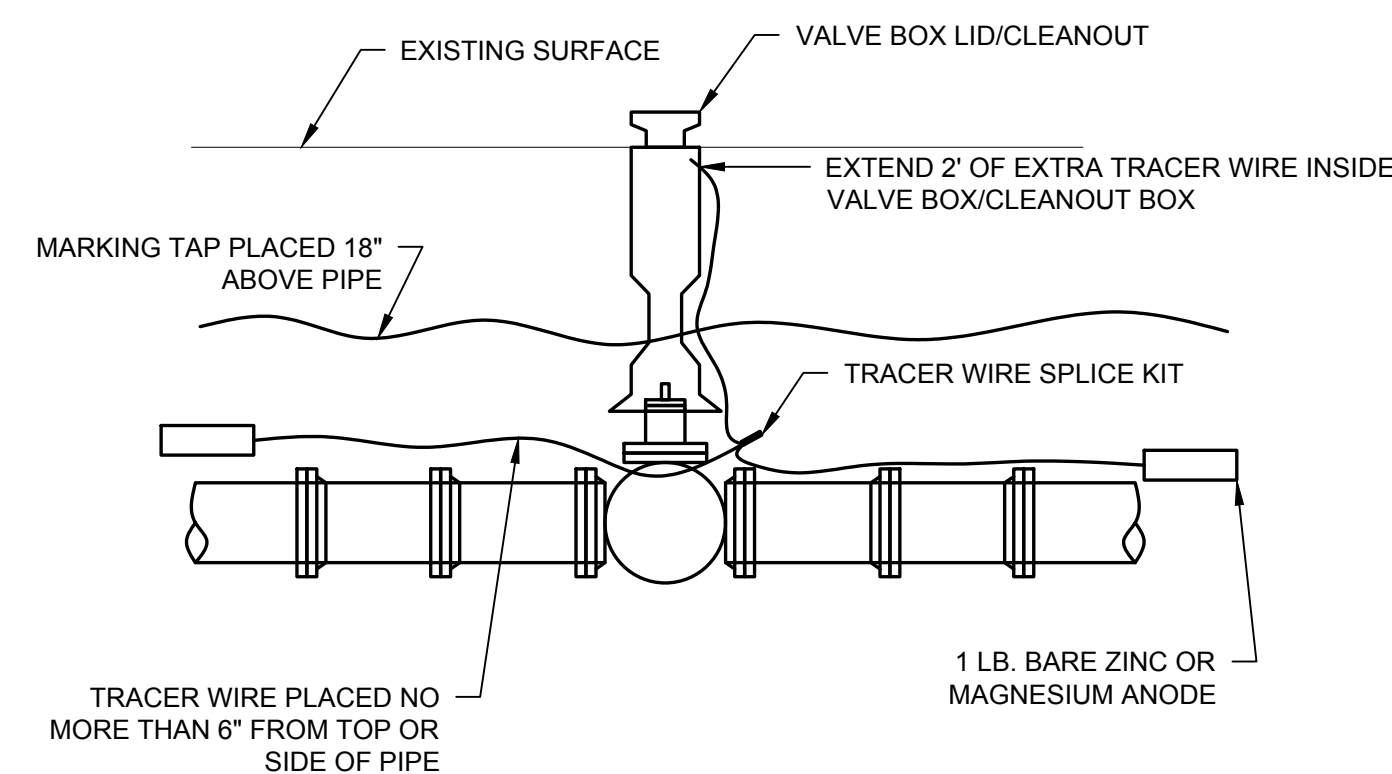
PERSPECTIVE VIEW



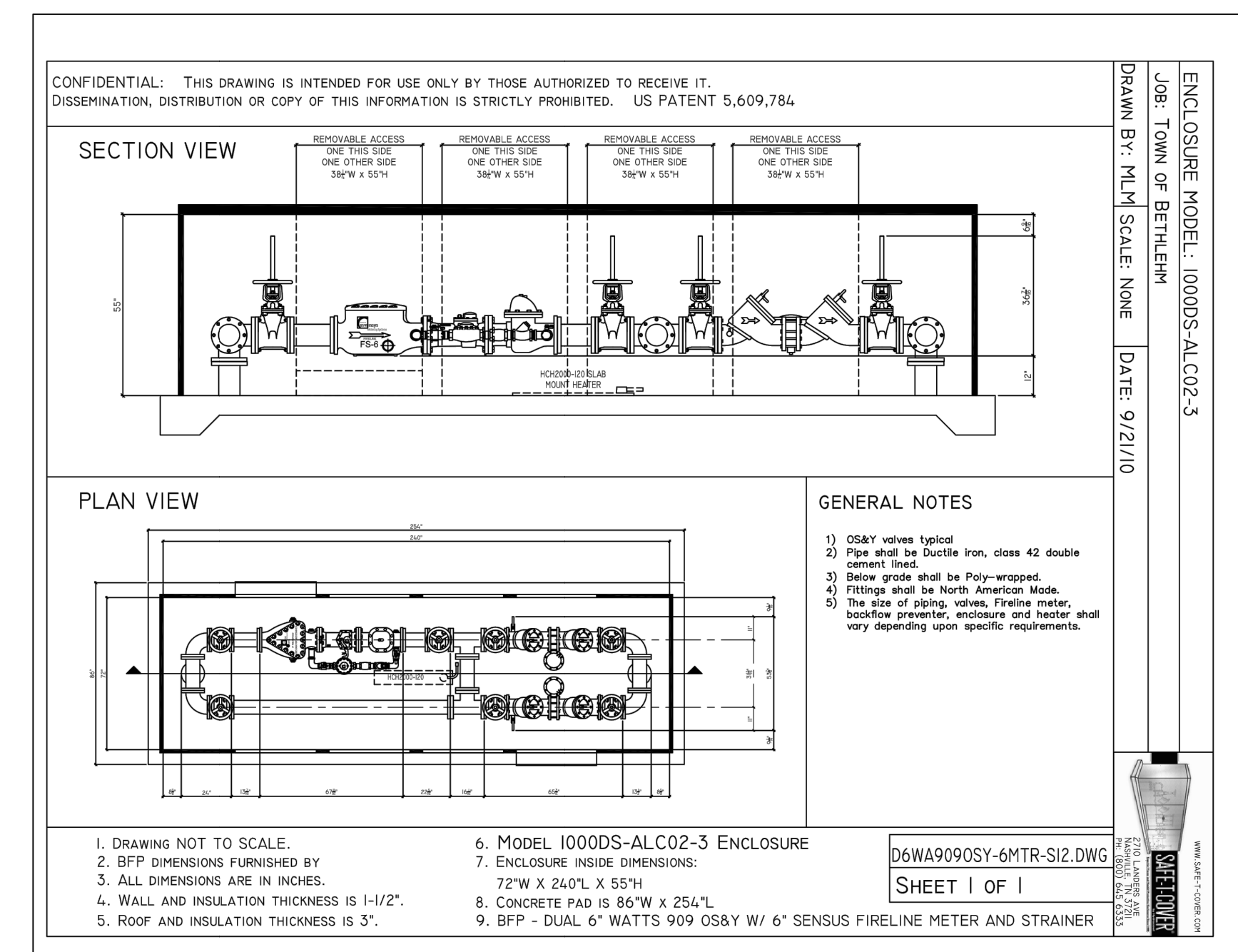
SECTION VIEW

SILT FENCE

- NOTES:
- MIRAFI FILTER FABRIC TO BE SECURED TO FENCE POSTS WITH STAPLES. POSTS SHALL BE STEEL EITHER "T" OR "U" TYPE OR HARDWOOD.
 - WHEN TWO SECTIONS OF FILTER CLOTH ADJOIN EACH OTHER THEY SHALL BE OVER-LAPPED BY SIX INCHES AND FOLDED.
 - MAINTENANCE SHALL BE PERFORMED AS NEEDED AND MATERIAL REMOVED WHEN "BULGES" DEVELOP IN THE SILT FENCE.



WATERMAIN/SANITARY SEWER FORCE MAIN TRACER WIRE/MARKER TAPE DETAIL



WATER HOT BOX (TOWN OF BETHLEHEM)