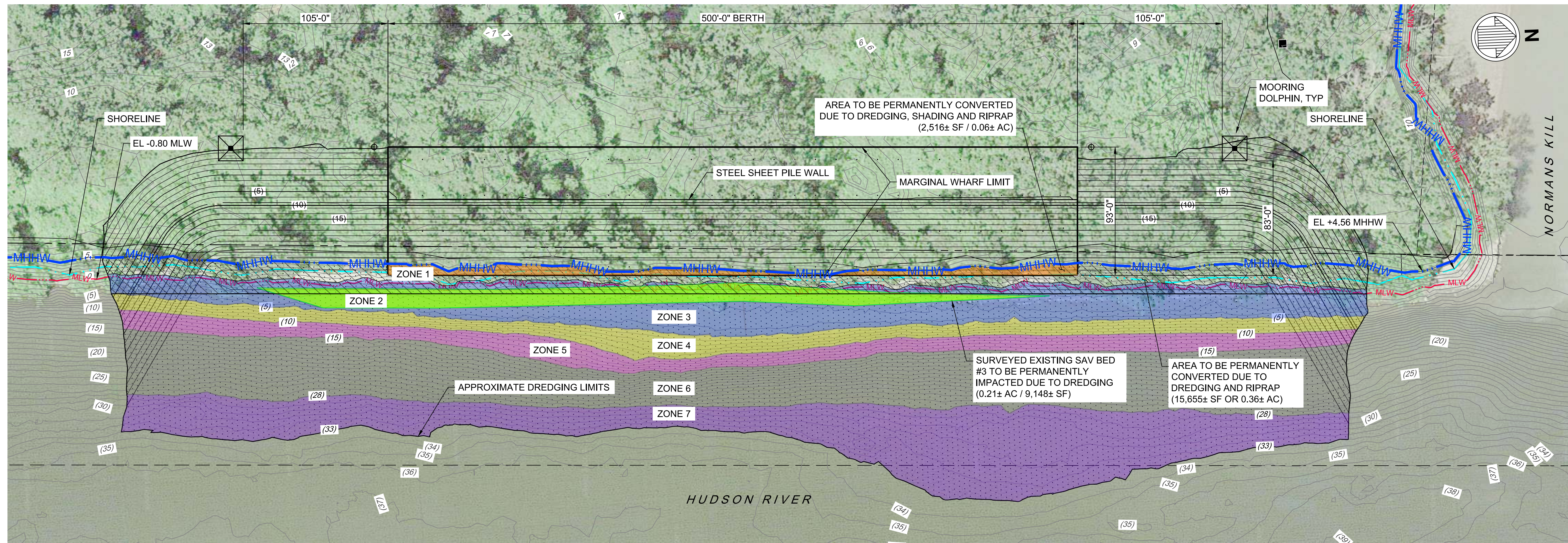


Figure 4-2A - General Wharf Layout - Impact Analysis



A1 PLAN - GENERAL ARRANGEMENT  
SCALE: 1" = 40'

ZONES	EXISTING ELEVATIONS (FEET)	HABITAT OF CONCERN	ZONES (ACRES)	MAIN IMPACTS / HABITAT CONVERSION (ACRES)			PERMANENT STURGEON IMPACTS (ACRES)
				DREDGING	SHADING	RIPRAP	
1 SEE LEGEND	MHHW TO 0	INTERTIDAL ZONE AND SHORE STRUCTURES	0.25	0.25	0.06	0.25	0.00
2	-2 to -5	SAV BED #3 (SPARSE LOW DENSITY)	0.21	0.21	0.00	0.05	0.21
3	0 TO -5	NATURAL RIVER BOTTOM (SILT CLAY, SAND AND SOME TRACE OF GRAVEL)	0.34	0.34	0.00	0.12	0.31
4	-5 TO -10	NATURAL RIVER BOTTOM (SILT CLAY, SAND AND SOME TRACE OF GRAVEL)	0.24	0.24	0.00	0.00	0.24
5	-10 TO -15	NATURAL RIVER BOTTOM (SILT CLAY, SAND AND SOME TRACE OF GRAVEL)	0.24	0.24	0.00	0.00	0.00
6	-15 TO -28	NATURAL RIVER BOTTOM (SILT CLAY, SAND AND SOME TRACE OF GRAVEL)	0.79	0.79	0.00	0.00	0.00
7	-28 TO -33	NATURAL RIVER BOTTOM (SILT CLAY, SAND AND SOME TRACE OF GRAVEL)	0.65	0.65	0.00	0.00	0.00
TOTAL (ACRES):			2.72	2.72	0.06	0.42	0.76

LEGEND:

- (22) EXISTING CONTOURS
- (33) PROPOSED CONTOURS
- MHHW EXISTING MEAN HIGHER HIGH WATER
- PROPOSED DREDGING
- DREDGING, SHADING AND RIPRAP IMPACTS
- DREDGING AND RIPRAP IMPACTS

NOTES:

- ZONE 1 INCLUDES SHADED AND RIPRAP AREAS.
- ZONES 2-7 INCLUDES 2' ALLOWABLE OVERDREDGE.
- ELEVATION DATUM: NAVD88.

40' 0' 40' 80'  
SCALE: 1"=40'

IT IS A VIOLATION OF THE NEW YORK STATE EDUCATION LAW FOR ANY PERSON, UNLESS HE IS ACTING UNDER THE DIRECTION OF A LICENSED PROFESSIONAL ENGINEER, TO ALTER AN ITEM ON THIS DOCUMENT IN ANY WAY. IF AN ITEM IS ALTERED, THE ALTERING ENGINEER SHALL AFFIX TO THE ITEM HIS SEAL AND THE NOTATION "ALTERED BY" FOLLOWED BY HIS SIGNATURE AND THE DATE OF SUCH ALTERATION, AND A SPECIFIC DESCRIPTION OF SUCH ALTERATION.



Mark	Description	Date	Appr.

PORT OF ALBANY EXPANSION  
HEAVY LIFT QUAY/WHARF  
PLAN - GENERAL  
ARRANGEMENT

Designed by: JCS	Checked by: MSW	Reviewed by: PGV	Date: JAN 2022	M&N Project No: 10949-01	Drawing code: 	Drawing Scale: 	Plot scale: 1:1 (D SHEET)
---------------------	--------------------	---------------------	-------------------	-----------------------------	-------------------	--------------------	---------------------------

529 FIFTH AVE, 14TH FLOOR  
NEW YORK, NY 10017  
212.768.7454  
m&n engineering, p.c.

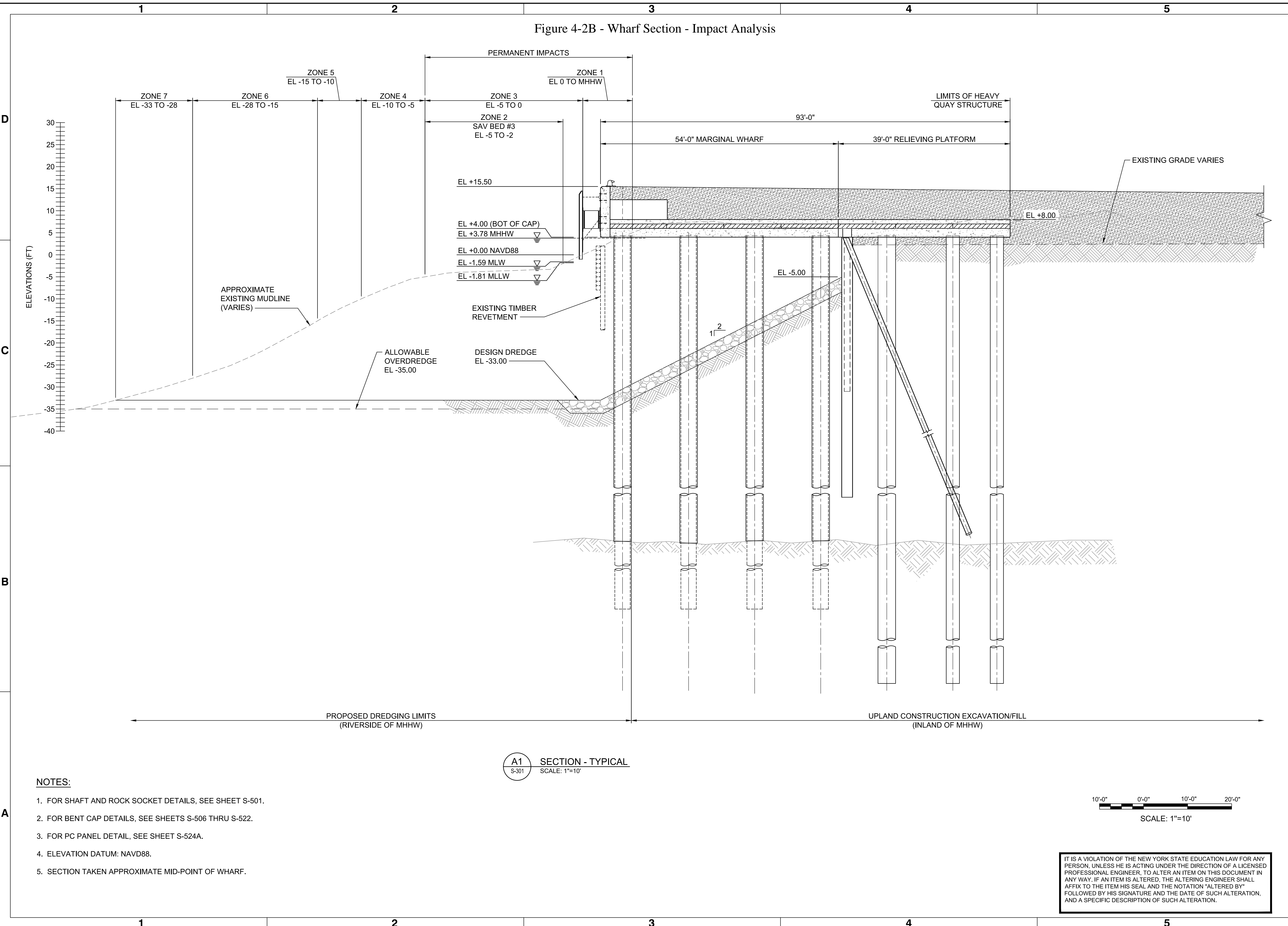
ALBANY PORT  
DISTRICT COMMISSION  
106 SMITH BLDG.  
ALBANY, NY 12202  
PORT OF ALBANY

SEAL

Sheet Reference No.  
S-101  
INDEX: 1 OF 2

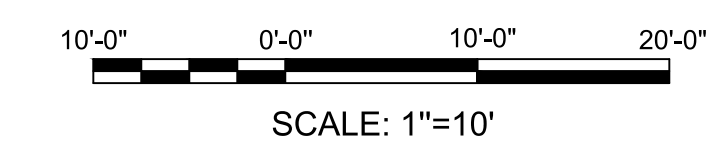
File: N:\18641.00 Albany Port Expansion\Draw\Drawings\Figures\Civil\Plan Updates\1094901S-101 - Standard\1094901S-101 - Standard\1094901S-101-101.dwg; Saved: 3/7/2022 3:55 PM by NOLIVERI

Figure 4-2B - Wharf Section - Impact Analysis



A1 SECTION - TYPICAL  
S-301 SCALE: 1"=10'

- NOTES:**
- FOR SHAFT AND ROCK SOCKET DETAILS, SEE SHEET S-501.
  - FOR BENT CAP DETAILS, SEE SHEETS S-506 THRU S-522.
  - FOR PC PANEL DETAIL, SEE SHEET S-524A.
  - ELEVATION DATUM: NAVD88.
  - SECTION TAKEN APPROXIMATE MID-POINT OF WHARF.



IT IS A VIOLATION OF THE NEW YORK STATE EDUCATION LAW FOR ANY PERSON, UNLESS HE IS ACTING UNDER THE DIRECTION OF A LICENSED PROFESSIONAL ENGINEER, TO ALTER AN ITEM ON THIS DOCUMENT IN ANY WAY. IF AN ITEM IS ALTERED, THE ALTERING ENGINEER SHALL AFFIX TO THE ITEM HIS SEAL AND THE NOTATION "ALTERED BY" FOLLOWED BY HIS SIGNATURE AND THE DATE OF SUCH ALTERATION, AND A SPECIFIC DESCRIPTION OF SUCH ALTERATION.

<p><b>PORT OF ALBANY EXPANSION HEAVY LIFT QUAY/WHARF</b></p>	<p><b>SECTION - TYPICAL</b></p>
<p>529 FIFTH AVE., 14TH FLOOR NEW YORK, NY 10017 212.766.7454</p> <p><b>m&amp;n engineering, p.c.</b></p>	<p>ALBANY PORT DISTRICT COMMISSION 106 SMITH BLVD. ALBANY, NY 12202</p> <p><b>PORT OF ALBANY</b></p>
<p>Designed by: JS Dwn by: M&amp;N</p>	<p>Reviewed by: M&amp;N Submitted by: John C Schirmer M&amp;N ENGINEERING P.C.</p>
<p>Date: JAN 2022 M&amp;N Project No. 10949-01</p>	<p>Drawing code: Drawing scale: 1:1 (0 SHEET)</p>
<p>SEAL</p>	
<p>Sheet Reference No. <b>S-301</b></p>	
<p>INDEX: 2 OF 2</p>	

File: N:\18641.00 Albany Port Expansion\Draw\Drawings\Figures\Civil\Wharf & Nichol Plan Updates\1094901S-301 - Standard\1094901S-301. Plotted: 3/7/2022 3:24 PM by NATALIE S. OLIVERI; Saved: 3/7/2022 3:20 PM by NOLIVERI