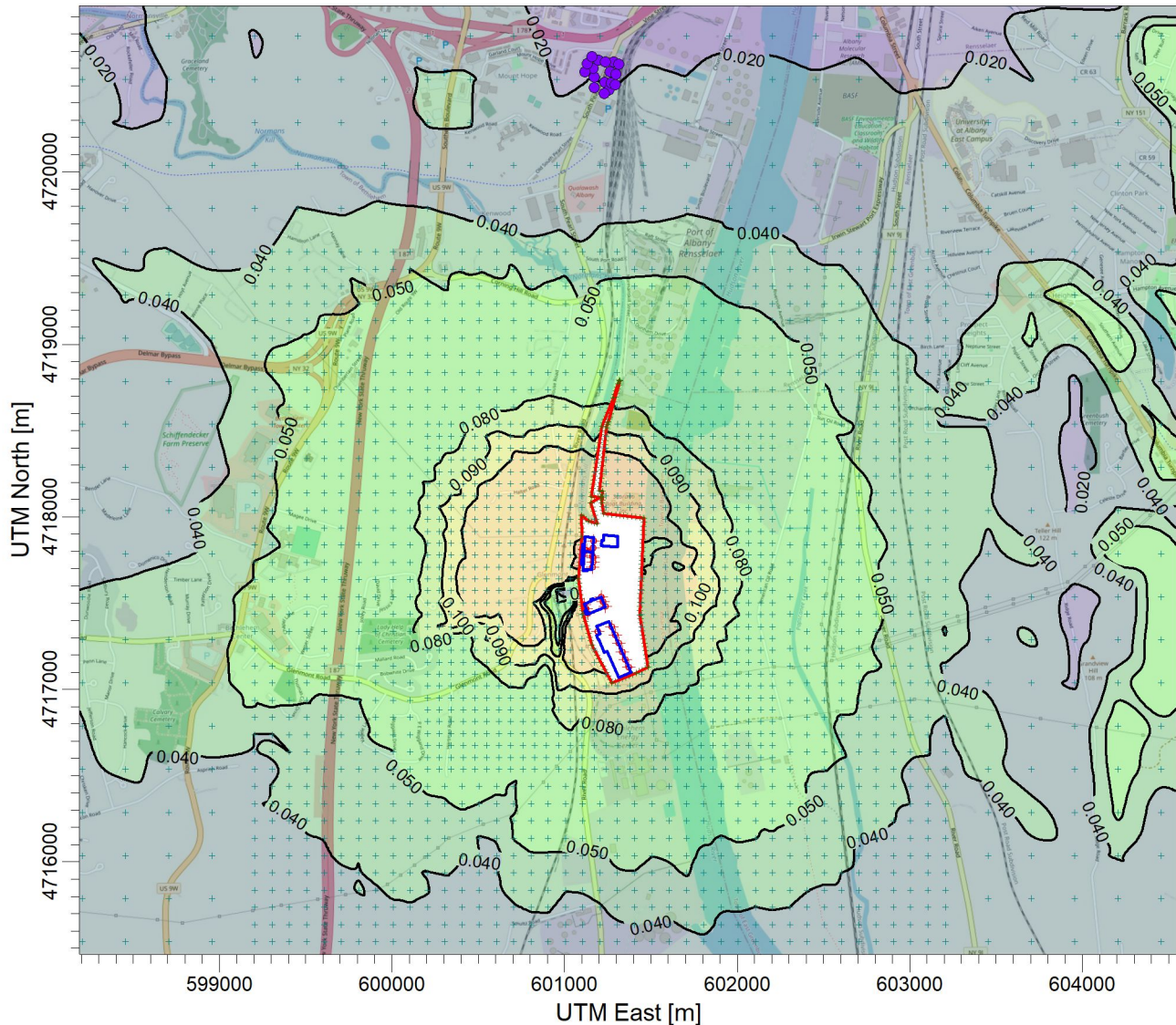


PROJECT TITLE:

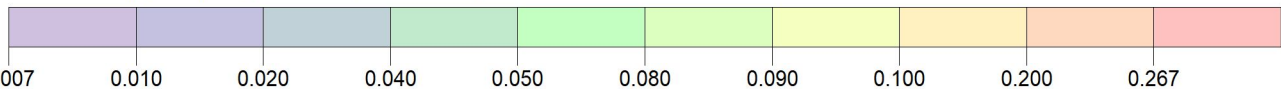
**E:\Marmen Inc Part 212 Review\Chemical (1-HR)\Kaolin_(Clay)
Marmen-Welcon Tower Manufacturing Plant - Kaolin (Clay)**



PLOT FILE OF HIGH 1ST HIGH 1-HR VALUES FOR SOURCE GROUP: ALL

ug/m³

Max: 0.267 [ug/m³] at (601093.33, 4717812.46)



| | | | |
|--|---|--|--|
| COMMENTS: Maximum 1-hr Kaolin (Clay) Impacts NYSDEC SGC = None | SOURCES: 22 | COMPANY NAME: Proactive Environmental Solutions, LLC | |
| | RECEPTORS: 3734 | MODELER: Chris Geraghty, CCM | |
| | OUTPUT TYPE: Concentration | SCALE: 1:40,000 | |
| | MAX: 0.267 ug/m³ | DATE: 3/14/2022 | PROJECT NO.: Marmen-Welcon |

