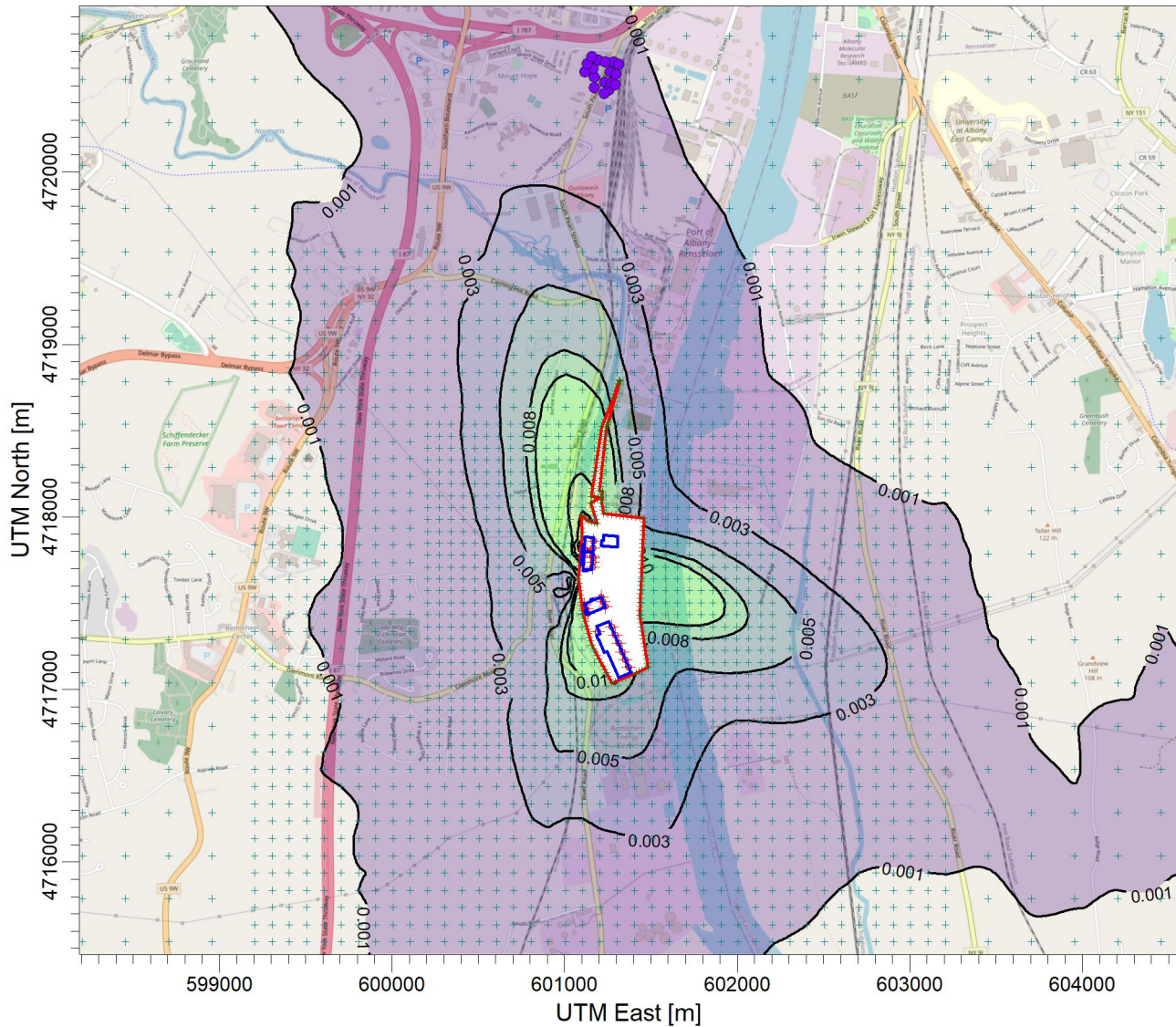


PROJECT TITLE:

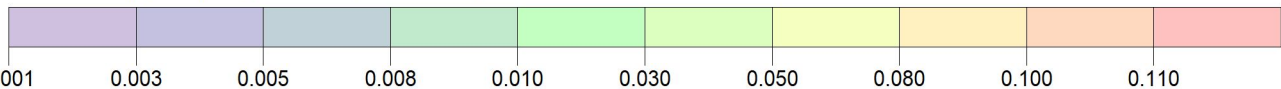
**E:\Marmen Inc Part 212 Review\Chemical (Annual)\Kaolin_(Clay)
Marmen-Welcon Tower Manufacturing Plant - Kaolin (Clay) 1332-58-7**




PLOT FILE OF ANNUAL VALUES AVERAGED ACROSS 5 YEARS FOR SOURCE GROUP: ALL

ug/m³

Max: 0.110 [ug/m³] at (601095.41, 4717837.17)



<p>COMMENTS:</p> <p>Maximum Annual Kaolin (Clay) Impacts</p> <p>NYSDEC AGC = 4.8 $\mu\text{g}\cdot\text{m}^{-3}$</p>	<p>SOURCES:</p> <p>22</p>	<p>COMPANY NAME:</p> <p>Proactive Environmental Solutions, LLC</p>	
	<p>RECEPTORS:</p> <p>3734</p>	<p>MODELER:</p> <p>Chris Geraghty, CCM</p>	
	<p>OUTPUT TYPE:</p> <p>Concentration</p>	<p>SCALE: 1:40,000</p> <p>0  1 km</p>	
	<p>MAX:</p> <p>0.110 ug/m³</p>	<p>DATE:</p> <p>3/14/2022</p>	<p>PROJECT NO.:</p> <p>Marmen-Welcon</p>