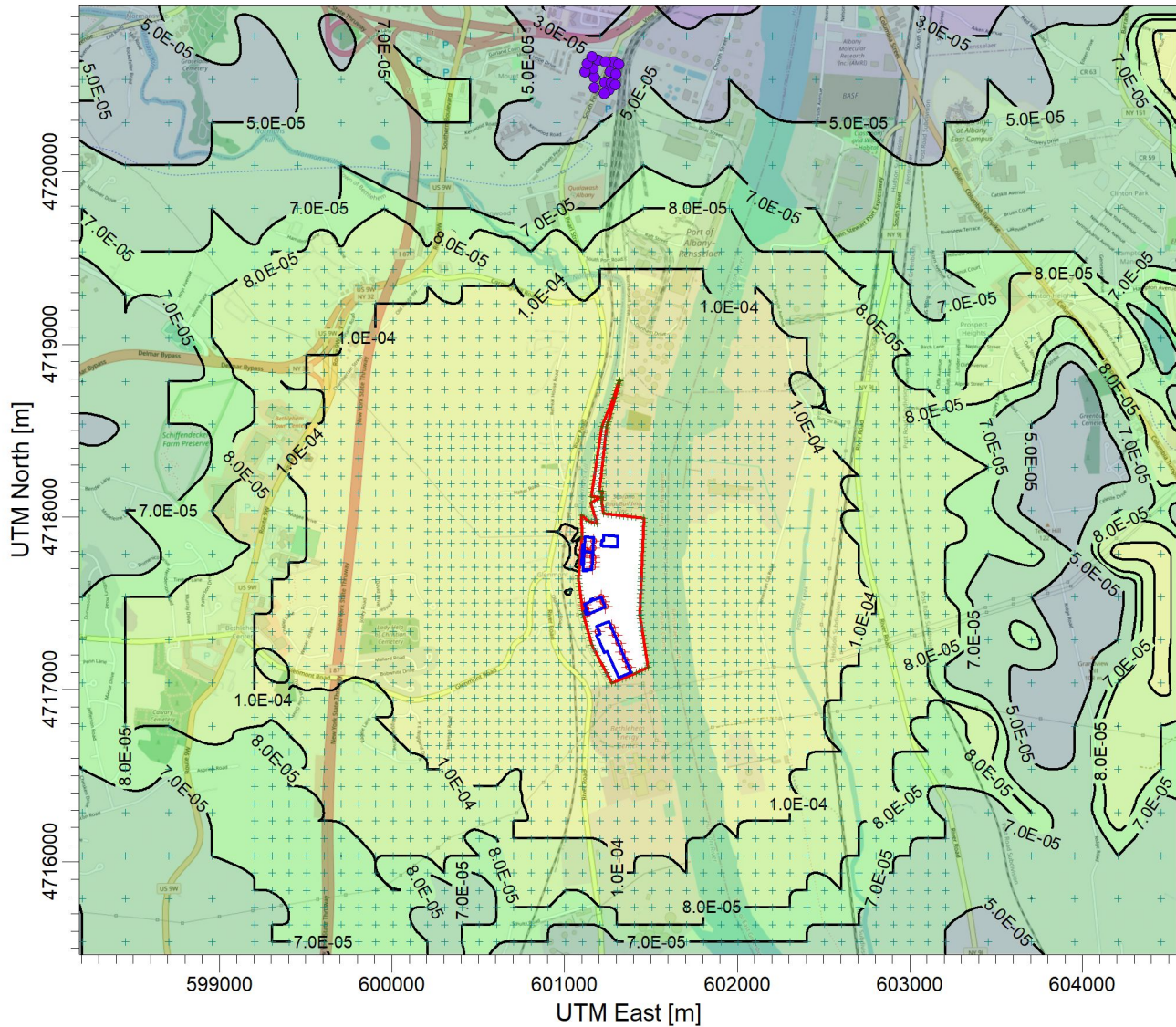


PROJECT TITLE:

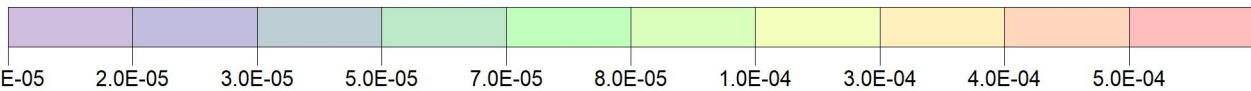
**E:\Marmen Inc Part 212 Review\Chemical (1-HR)\Lead\_7439-92-1  
Marmen-Welcon Tower Manufacturing Plant - Lead 7439-92-1**



PLOT FILE OF HIGH 1ST HIGH 1-HR VALUES FOR SOURCE GROUP: ALL

ug/m<sup>3</sup>

Max: 5.0E-04 [ug/m<sup>3</sup>] at (601093.33, 4717812.46)



|   |   |  |  |
|---|---|--|--|
| COMMENTS:<br><br>Maximum 1-hr Lead Impacts<br><br>NYSDEC SGC = None | SOURCES:<br><br><b>22</b>                   | COMPANY NAME:<br><br><b>Proactive Environmental Solutions, LLC</b> |  |
|   | RECEPTORS:<br><br><b>3734</b>               | MODELER:<br><br><b>Chris Geraghty, CCM</b>                         |  |
|   | OUTPUT TYPE:<br><br><b>Concentration</b>    | SCALE: 1:40,000<br><br>  |  |
|   | MAX:<br><br><b>5.0E-04 ug/m<sup>3</sup></b> | DATE:<br><br><b>3/14/2022</b>                                      | PROJECT NO.:<br><br><b>Marmen-Welcon</b> |

