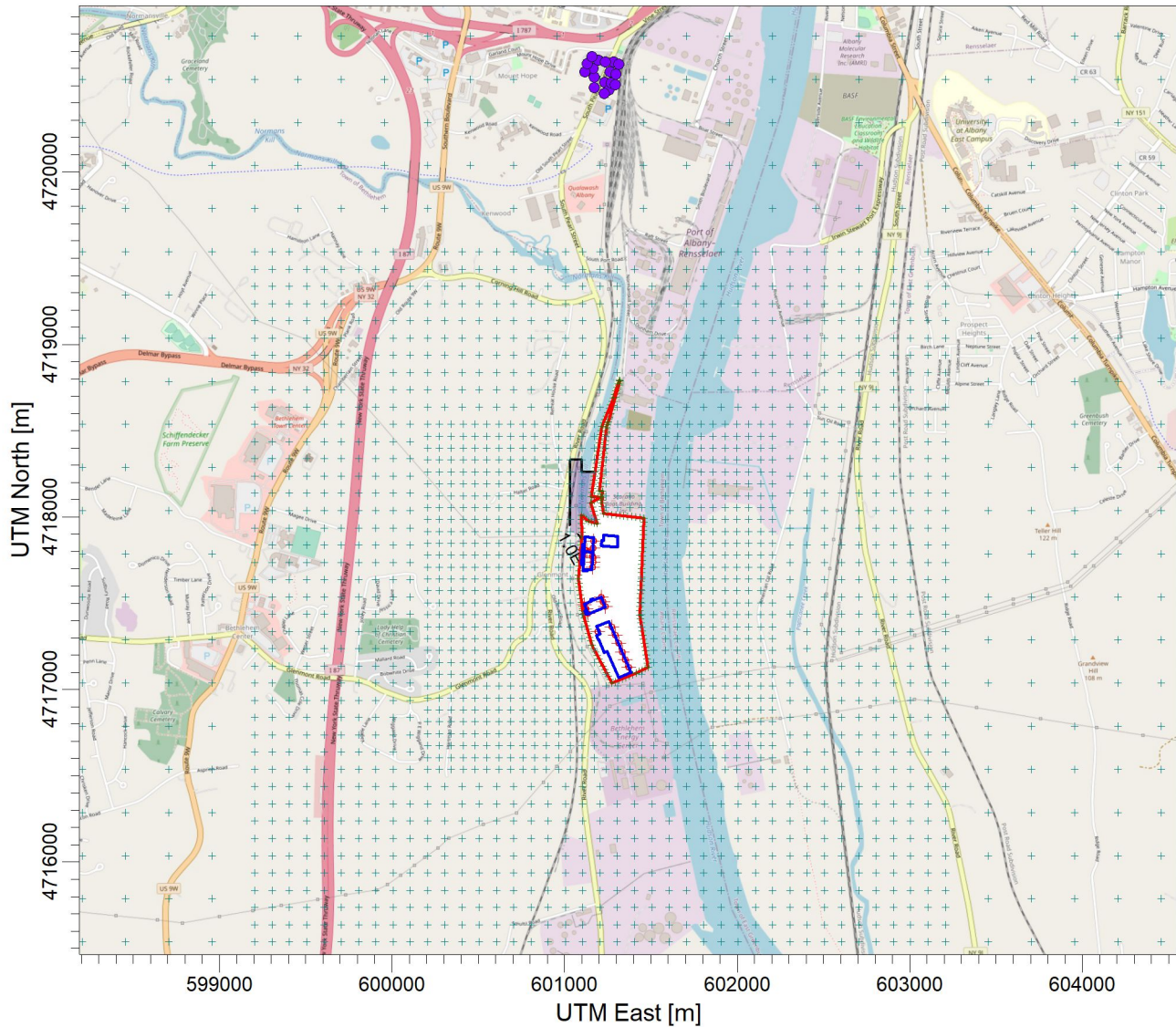


PROJECT TITLE:

**E:\Marmen Inc Part 212 Review\Chemical (Annual)\Lead\_7439-92-1  
Marmen-Welcon Tower Manufacturing Plant - Lead 7439-92-1**



PLOT FILE OF ANNUAL VALUES AVERAGED ACROSS 5 YEARS FOR SOURCE GROUP: ALL

ug/m<sup>3</sup>

Max: 3.0E-05 [ug/m<sup>3</sup>] at (601095.41, 4717837.17)



COMMENTS:  Maximum Annual Lead Impacts  NYSDEC AGC = 0.038 ug*m <sup>-3</sup>	SOURCES:  <b>22</b>	COMPANY NAME:  <b>Proactive Environmental Solutions, LLC</b>		
	RECEPTORS:  <b>3734</b>	MODELER:  <b>Chris Geraghty, CCM</b>		
	OUTPUT TYPE:  <b>Concentration</b>	SCALE:  1:40,000  		
	MAX:  <b>3.0E-05 ug/m<sup>3</sup></b>	DATE:  <b>3/14/2022</b>		