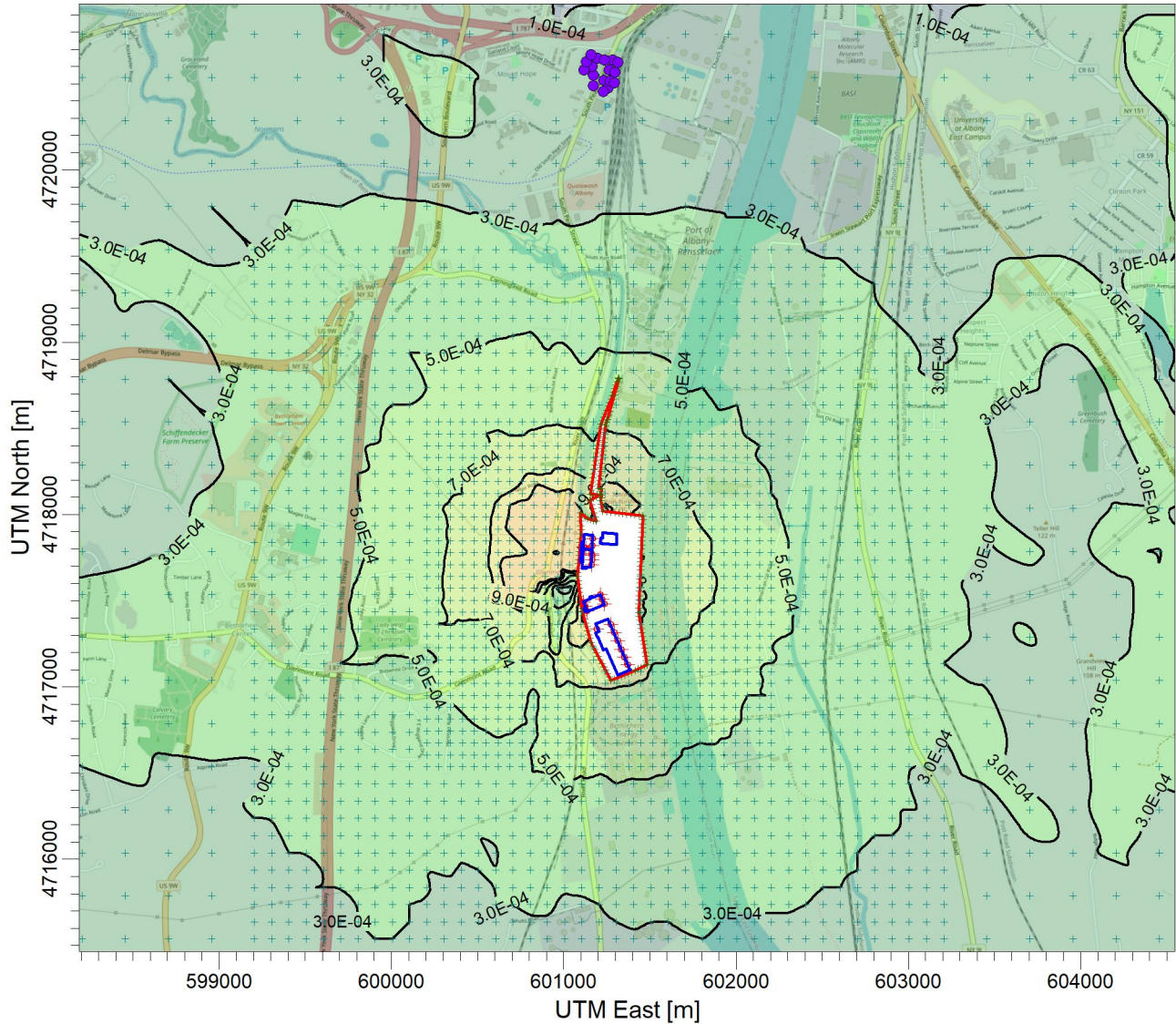


PROJECT TITLE:

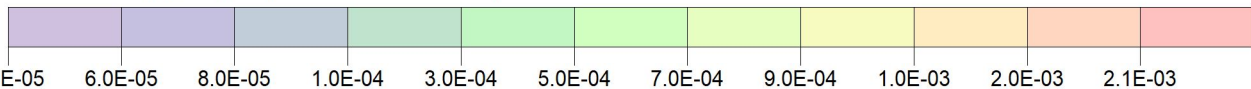
**E:\Marmen Inc Part 212 Review\Chemical (1-HR)\Lecithin\_8002-43-5  
Marmen-Welcon Tower Manufacturing Plant - Lecithin 8002-43-5**



PLOT FILE OF HIGH 1ST HIGH 1-HR VALUES FOR SOURCE GROUP: ALL

ug/m<sup>3</sup>

Max: 2.1E-03 [ug/m<sup>3</sup>] at (601093.33, 4717812.46)



<p>COMMENTS:</p> <p>Maximum 1-hr Lecithin Impacts</p> <p>NYSDEC SGC = None</p>	<p>SOURCES:</p> <p><b>22</b></p>	<p>COMPANY NAME:</p> <p><b>Proactive Environmental Solutions, LLC</b></p>	
	<p>RECEPTORS:</p> <p><b>3734</b></p>	<p>MODELER:</p> <p><b>Chris Geraghty, CCM</b></p>	<p><b>PROACTIVE</b> Environmental Solutions</p>
	<p>OUTPUT TYPE:</p> <p><b>Concentration</b></p>	<p>SCALE:</p> <p>1:40,000</p> <p>0  1 km</p>	
	<p>MAX:</p> <p><b>2.1E-03 ug/m<sup>3</sup></b></p>	<p>DATE:</p> <p><b>3/14/2022</b></p>	<p>PROJECT NO.:</p> <p><b>Marmen-Welcon</b></p>