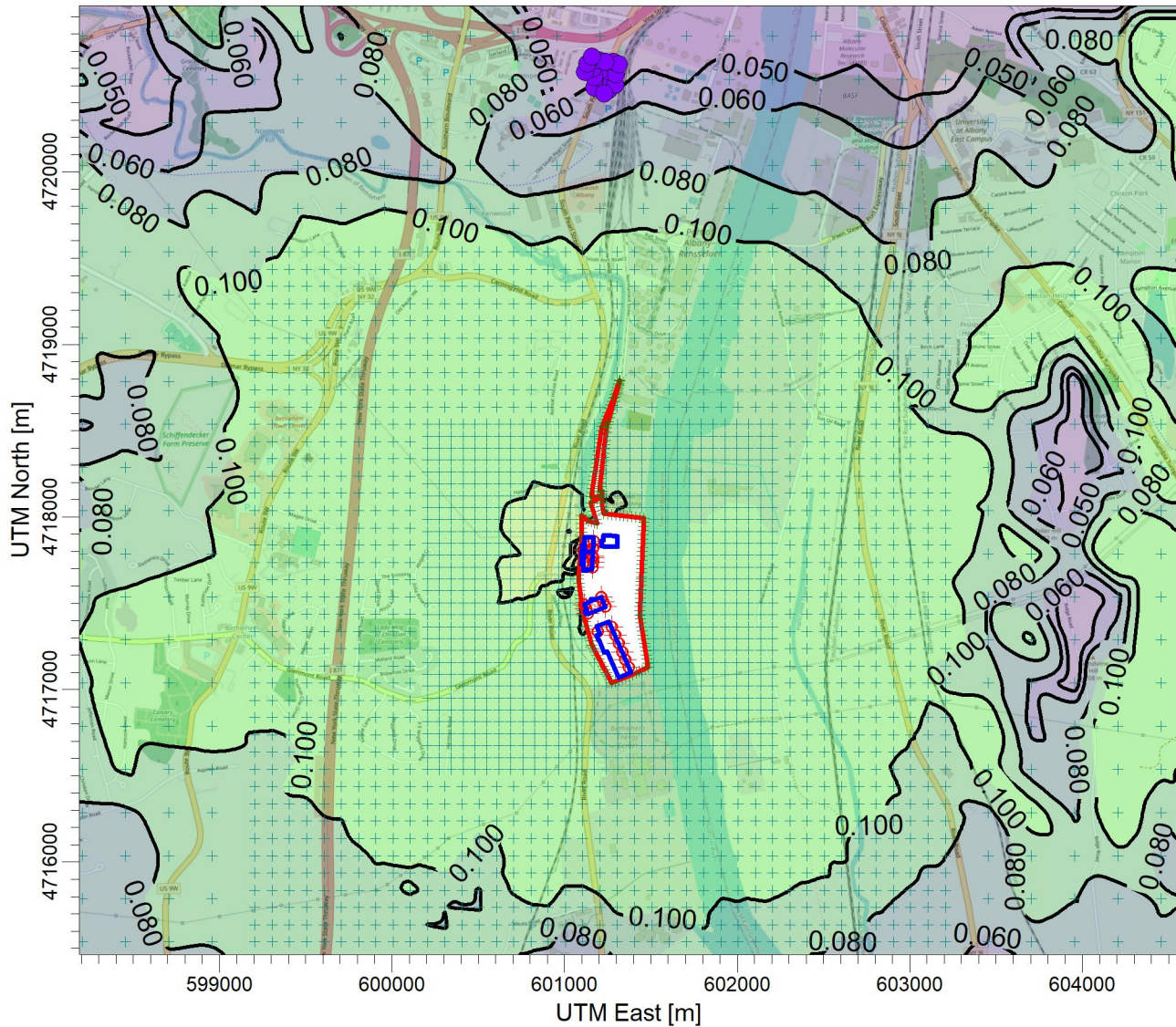


PROJECT TITLE:

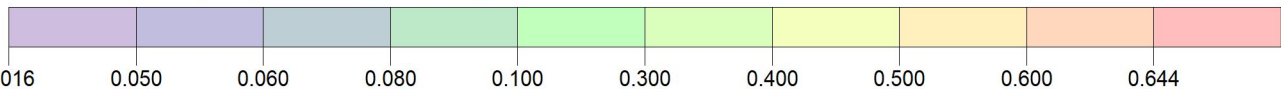
**E:\Marmen Inc Part 212 Review\Chemical (1-HR)\Limestone_1317-65-3
Marmen-Welcon Tower Manufacturing Plant - Limestone 1317-65-3**



PLOT FILE OF HIGH 1ST HIGH 1-HR VALUES FOR SOURCE GROUP: ALL

ug/m³

Max: 0.644 [ug/m³] at (601093.33, 4717812.46)



COMMENTS: Maximum 1-hr Limestone Impacts NYSDEC SGC = None	SOURCES: 22	COMPANY NAME: Proactive Environmental Solutions, LLC	
	RECEPTORS: 3734	MODELER: Chris Geraghty, CCM	
	OUTPUT TYPE: Concentration	SCALE: 1:40,000 	
	MAX: 0.644 ug/m³	DATE: 3/14/2022	PROJECT NO.: Marmen-Welcon

