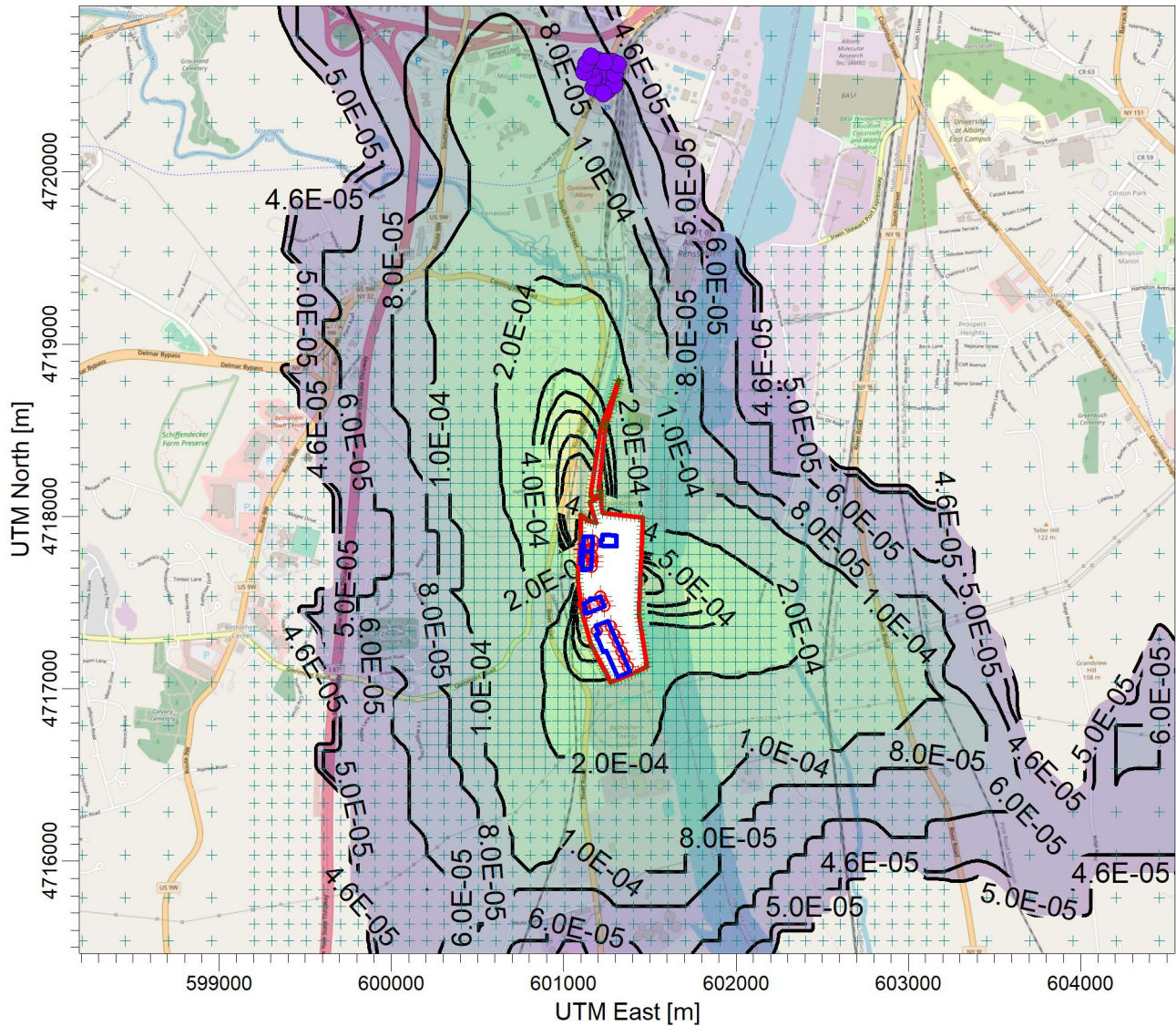


PROJECT TITLE:

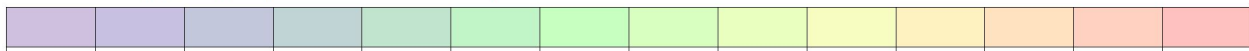
E:\Marmen Inc Part 212 Review\Chemical (Annual)\Limestone_1317-65-3
Marmen-Welcon Tower Manufacturing Plant - Limestone 1317-65-3



PLOT FILE OF ANNUAL VALUES AVERAGED ACROSS 5 YEARS FOR SOURCE GROUP: ALL

ug/m³

Max: 4.6E-03 [ug/m³] at (601095.41, 4717837.17)



4.6E-05 5.0E-05 6.0E-05 8.0E-05 1.0E-04 2.0E-04 4.0E-04 5.0E-04 6.0E-04 8.0E-04 1.0E-03 2.0E-03 4.0E-03 4.6E-03

COMMENTS:

Maximum Annual Limestone Impacts

NYSDEC AGC = None

SOURCES:

22

RECEPTORS:

3734

OUTPUT TYPE:

Concentration

MAX:

4.6E-03 ug/m³

COMPANY NAME:

Proactive Environmental Solutions, LLC

MODELER:

Chris Geraghty, CCM

SCALE:

1:40,000

0 1 km

DATE:

3/14/2022



PROJECT NO.:

Marmen-Welcon