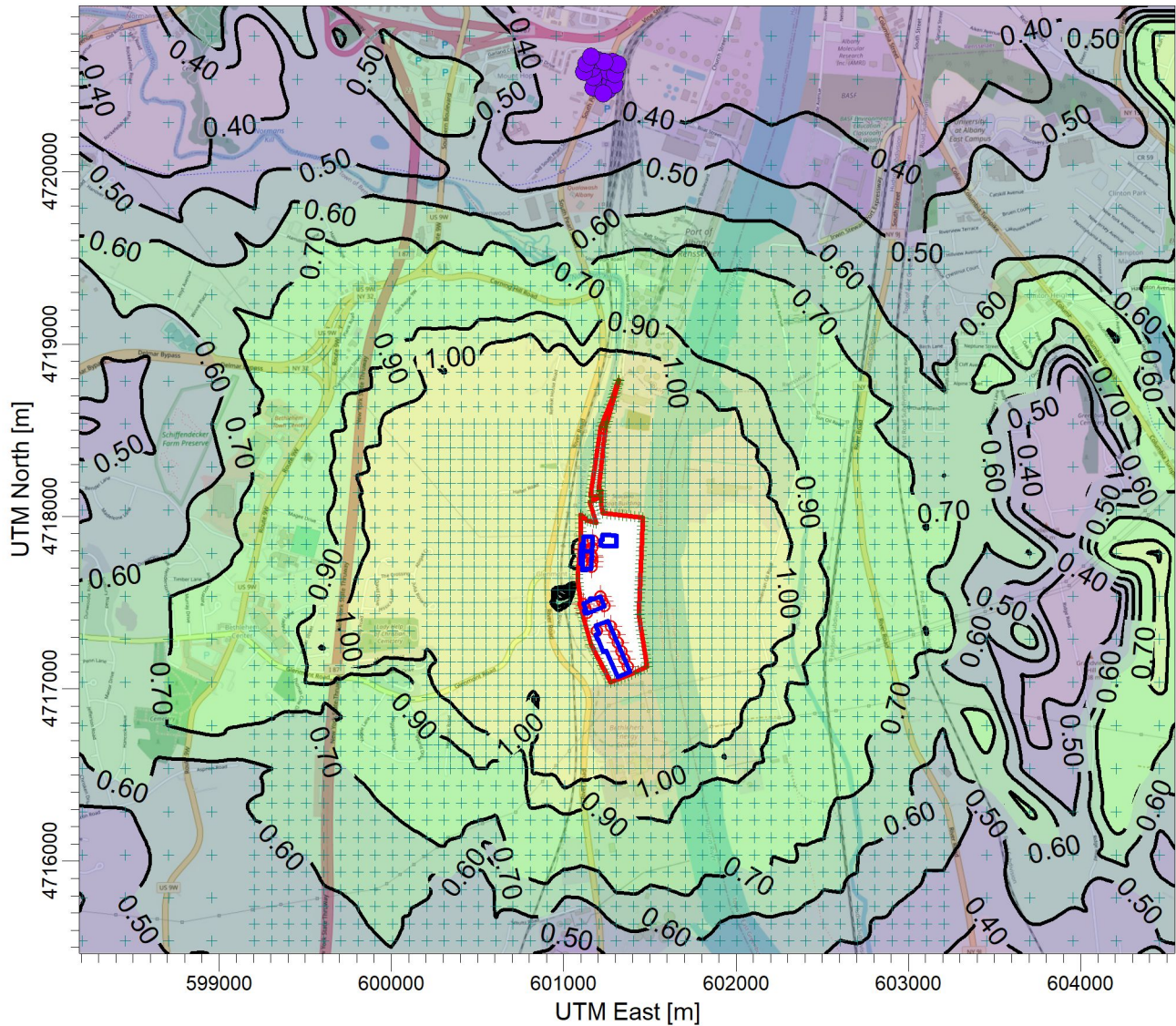


PROJECT TITLE:

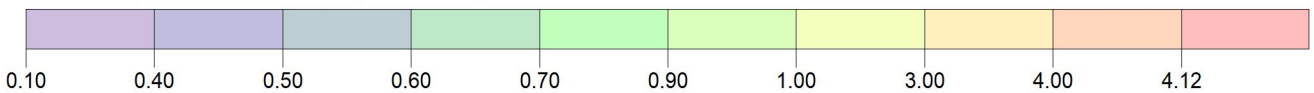
**E:\Marmen Inc Part 212 Review\Chemical (1-HR)\Methyl-1,2,2,6,6-P-4-P
Marmen-Welcon Tower Manufacturing Plant - Methyl-1,2,2,6,6-P-4-P**




PLOT FILE OF HIGH 1ST HIGH 1-HR VALUES FOR SOURCE GROUP: ALL

ug/m³

Max: 4.12 [ug/m³] at (601093.33, 4717812.46)



<p>COMMENTS:</p> <p>Maximum 1-hr Methyl-1,2,2,6,6-P-4-P Impacts</p> <p>NYSDEC SGC = None</p>	<p>SOURCES:</p> <p>22</p>	<p>COMPANY NAME:</p> <p>Proactive Environmental Solutions, LLC</p>	
	<p>RECEPTORS:</p> <p>3734</p>	<p>MODELER:</p> <p>Chris Geraghty, CCM</p>	
	<p>OUTPUT TYPE:</p> <p>Concentration</p>	<p>SCALE: 1:40,000</p> <p>0  1 km</p>	
	<p>MAX:</p> <p>4.12 ug/m³</p>	<p>DATE:</p> <p>3/14/2022</p>	<p>PROJECT NO.:</p> <p>Marmen-Welcon</p>