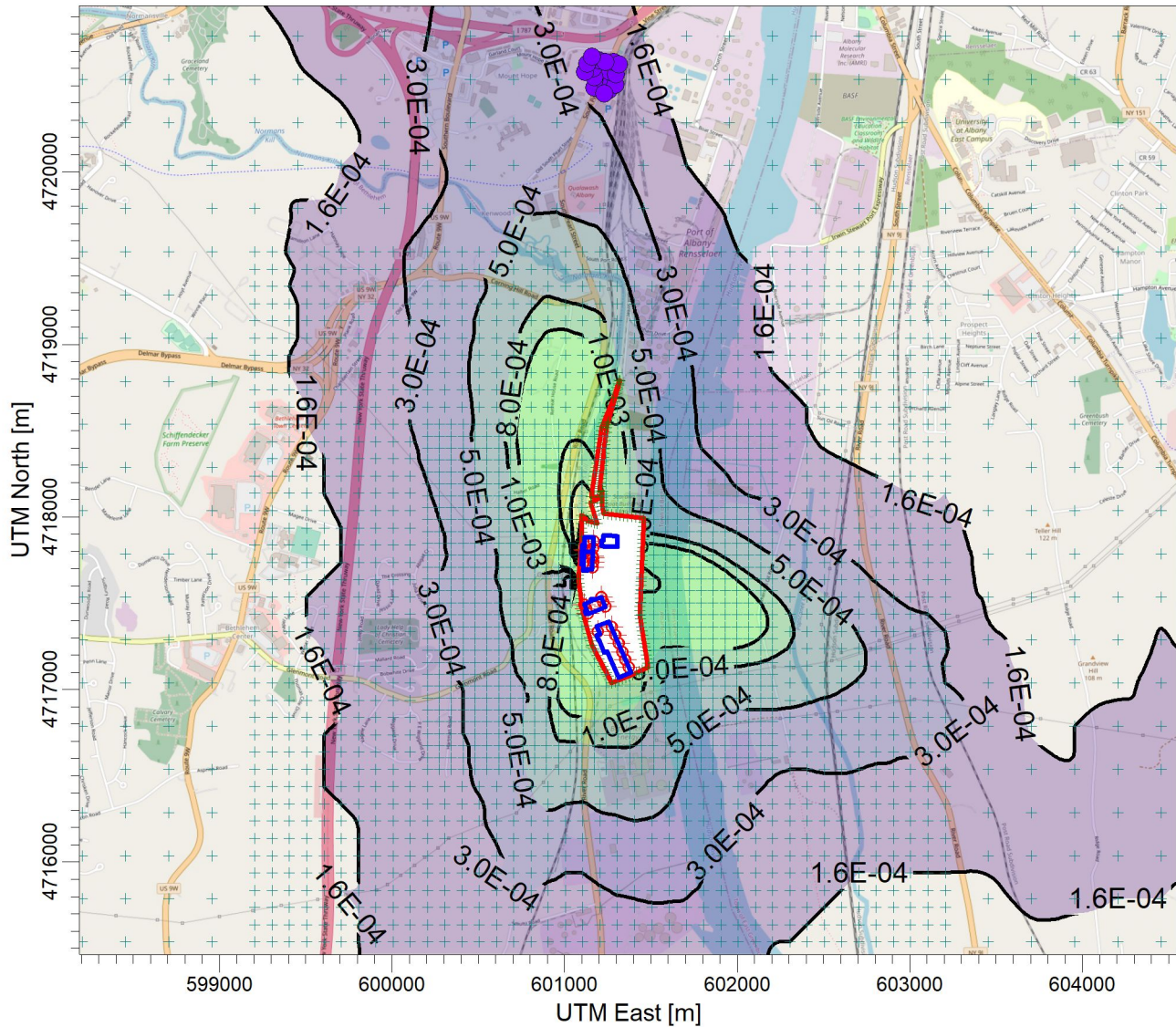


PROJECT TITLE:

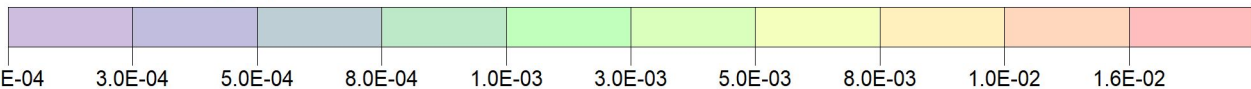
**E:\Marmen Inc Part 212 Review\Chemical (Ann)\Methyl-1,2,2,6,6-P-4-P  
Marmen-Welcon Tower Manufacturing Plant - Methyl-1,2,2,6,6-P-4-P**



PLOT FILE OF ANNUAL VALUES AVERAGED ACROSS 5 YEARS FOR SOURCE GROUP: ALL

ug/m<sup>3</sup>

Max: 1.6E-02 [ug/m<sup>3</sup>] at (601095.41, 4717837.17)



<p>COMMENTS:</p> <p>Maximum Annual Methyl-1,2,2,6,6-P-4-P Impacts</p> <p>NYSDEC AGC = None</p>	<p>SOURCES:</p> <p><b>22</b></p>	<p>COMPANY NAME:</p> <p><b>Proactive Environmental Solutions, LLC</b></p>	
	<p>RECEPTORS:</p> <p><b>3734</b></p>	<p>MODELER:</p> <p><b>Chris Geraghty, CCM</b></p>	
	<p>OUTPUT TYPE:</p> <p><b>Concentration</b></p>	<p>SCALE: 1:40,000</p> <p>0  1 km</p>	
	<p>MAX:</p> <p><b>1.6E-02 ug/m<sup>3</sup></b></p>	<p>DATE:</p> <p><b>3/14/2022</b></p>	<p>PROJECT NO.:</p> <p><b>Marmen-Welcon</b></p>