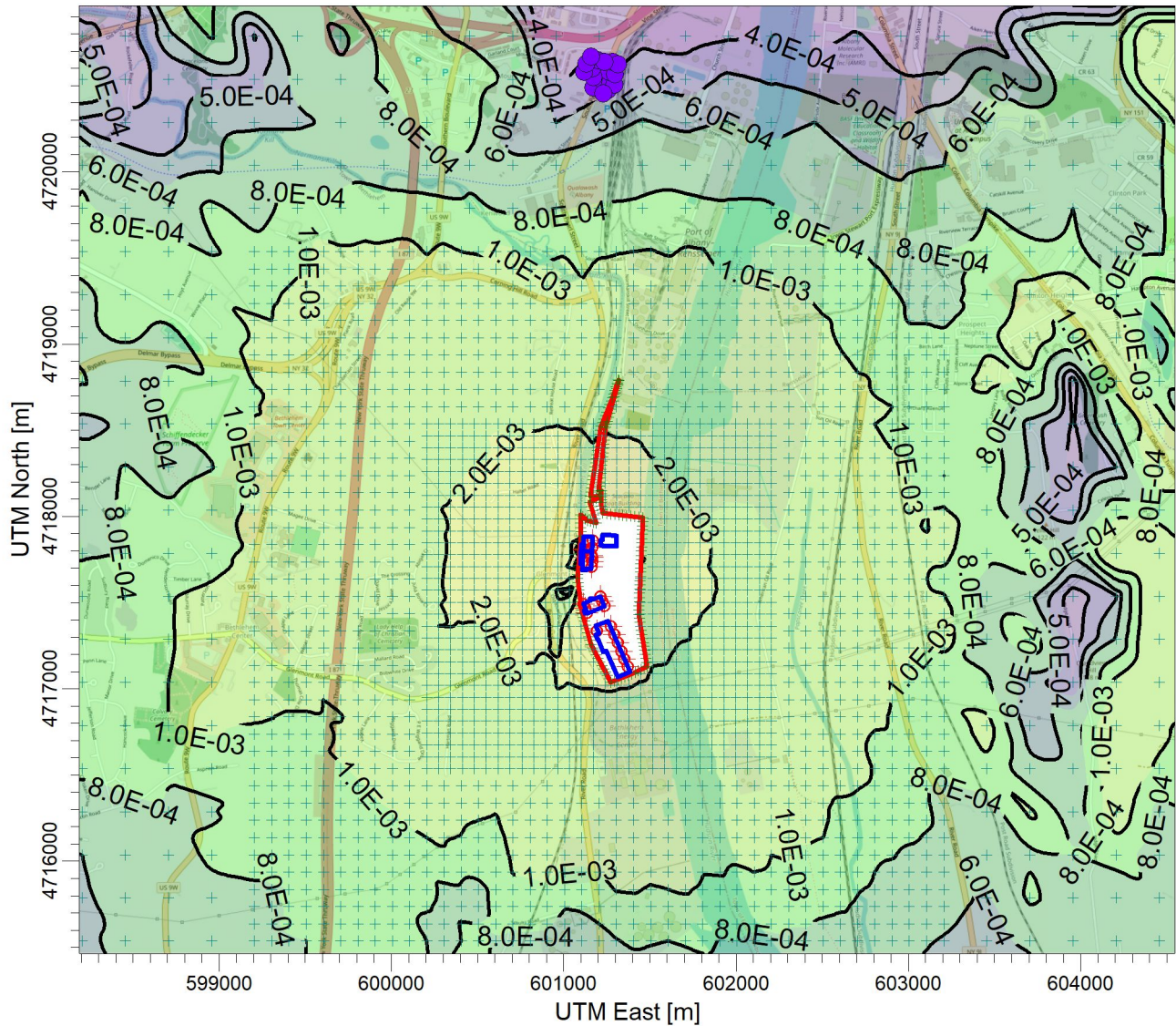


PROJECT TITLE:

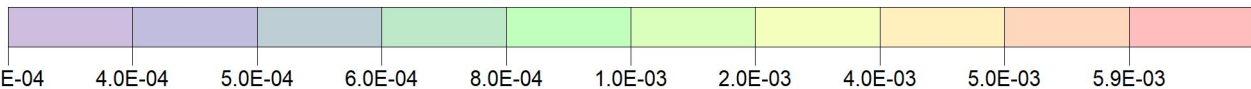
**E:\Marmen Inc Part 212 Review\Chemical (1-HR)\Mica_12001-26-2
Marmen-Welcon Tower Manufacturing Plant - Mica 12001-26-2**



PLOT FILE OF HIGH 1ST HIGH 1-HR VALUES FOR SOURCE GROUP: ALL

$\mu\text{g}/\text{m}^3$

Max: 5.9×10^{-3} [$\mu\text{g}/\text{m}^3$] at (601093.33, 4717812.46)



<p>COMMENTS:</p> <p>Maximum 1-hr Mica Impacts</p> <p>NYSDEC SGC = None</p>	<p>SOURCES:</p> <p>22</p>	<p>COMPANY NAME:</p> <p>Proactive Environmental Solutions, LLC</p>	
	<p>RECEPTORS:</p> <p>3734</p>	<p>MODELER:</p> <p>Chris Geraghty, CCM</p>	
	<p>OUTPUT TYPE:</p> <p>Concentration</p>	<p>SCALE: 1:40,000</p> <p>0 1 km</p>	
	<p>MAX:</p> <p>5.9×10^{-3} $\mu\text{g}/\text{m}^3$</p>	<p>DATE:</p> <p>3/14/2022</p>	<p>PROJECT NO.:</p> <p>Marmen-Welcon</p>