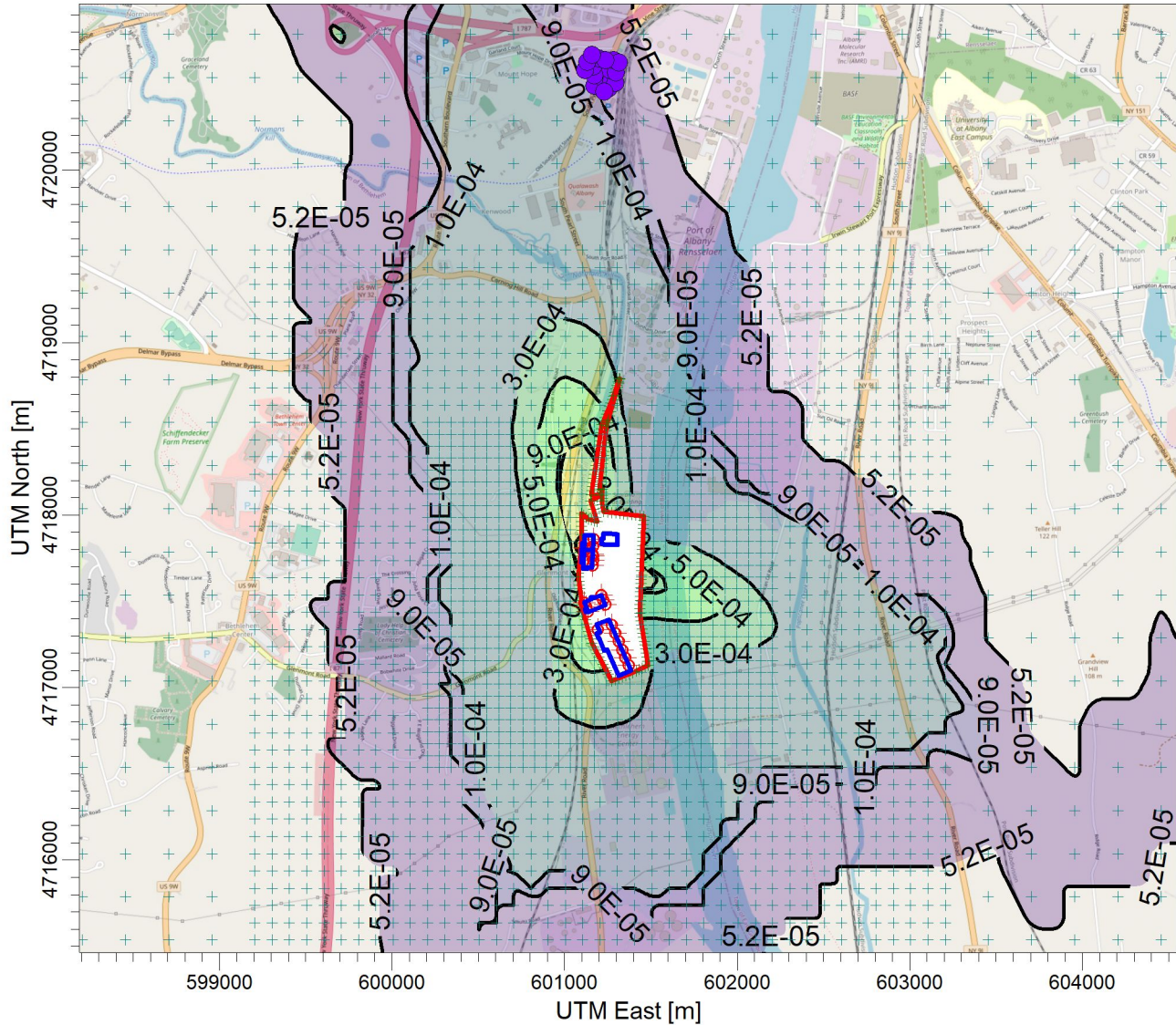


PROJECT TITLE:

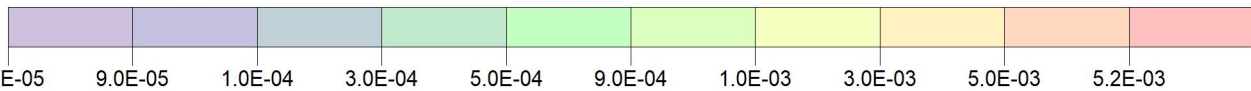
**E:\Marmen Inc Part 212 Review\Chemical (Annual)\Nepheline_Syenite
Marmen-Welcon Tower Manufacturing Plant - Nepheline Syenite**



PLOT FILE OF ANNUAL VALUES AVERAGED ACROSS 5 YEARS FOR SOURCE GROUP: ALL

ug/m³

Max: 5.2E-03 [ug/m³] at (601095.41, 4717837.17)



COMMENTS: Maximum Annual Nepheline Syenite Impacts NYSDEC AGC = None	SOURCES: 22	COMPANY NAME: Proactive Environmental Solutions, LLC	
	RECEPTORS: 3734	MODELER: Chris Geraghty, CCM	
	OUTPUT TYPE: Concentration	SCALE: 1:40,000 	
	MAX: 5.2E-03 ug/m³	DATE: 3/14/2022	PROJECT NO.: Marmen-Welcon

